

For Research Use Only

PSMB6 Recombinant antibody

Catalog Number: 86491-1-RR



Basic Information

Catalog Number: 86491-1-RR	GenBank Accession Number: BC000835	Purification Method: Protein A purification
Size: 100ul , Concentration: 1000 µg/ml by Nanodrop;	GeneID (NCBI): 5694	CloneNo.: 251232G5
Source: Rabbit	UNIPROT ID: P28072	Recommended Dilutions: WB: 1:5000-1:50000 IF/ICC: 1:250-1:1000
Isotype: IgG	Full Name: proteasome (prosome, macropain) subunit, beta type, 6	
Immunogen Catalog Number: AG2296	Calculated MW: 239 aa, 25 kDa	
	Observed MW: 25 kDa	

Applications

Tested Applications: WB, IF/ICC, ELISA	Positive Controls:
Species Specificity: human, mouse	WB : HeLa cells, DU 145 cells, PC-3 cells, K-562 cells, MCF-7 cells, Neuro-2a cells, C2C12 cells
	IF/ICC : HeLa cells,

Background Information

PSMB6 (Proteasome subunit beta type-6) is also named as LMPY, Y and belongs to the peptidase T1B family. The proteasome is a multicatalytic proteinase complex which is characterized by its ability to cleave peptides with Arg, Phe, Tyr, Leu, and Glu adjacent to the leaving group at neutral or slightly basic pH. It may also catalyze basal processing of intracellular antigens. It can be up-regulated in anaplastic thyroid cancer cell lines and down-regulated by IFNG/IFN-gamma (at protein level) (PMID:8066462;15613457).

Storage

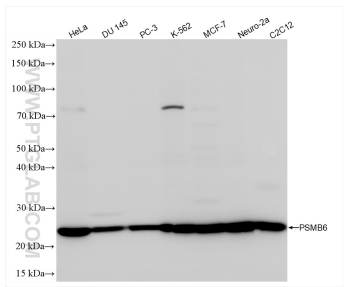
Storage:
Store at -20°C. Stable for one year after shipment.
Storage Buffer:
PBS with 0.02% sodium azide and 50% glycerol, pH7.3
Aliquoting is unnecessary for -20°C storage

*** 20ul sizes contain 0.1% BSA

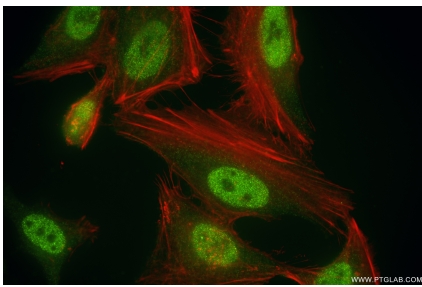
For technical support and original validation data for this product please contact:
T: 1 (888) 4PTGLAB (1-888-478-4522) (toll free in USA), or 1(312) 455-8498 (outside USA)
E: proteintech@ptglab.com
W: ptglab.com

This product is exclusively available under Proteintech Group brand and is not available to purchase from any other manufacturer.

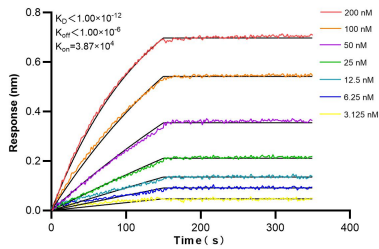
Selected Validation Data



Various lysates were subjected to SDS PAGE followed by western blot with 86491-1-RR (PSMB6 antibody) at dilution of 1:10000 incubated at room temperature for 1.5 hours.



Immunofluorescent analysis of (4% PFA) fixed HeLa cells using PSMB6 antibody (86491-1-RR, Clone: 251232G5) at dilution of 1:500 and CoraLite® 488-Conjugated Goat Anti-Rabbit IgG(H+L) (SA00013-2), CL594-Phalloidin (red).



Biolayer interferometry (BLI) kinetic assays of 86491-1-RR against Human PSMB6 were performed. The affinity constant is below 1 pM.