

For Research Use Only

# CD146/MCAM Recombinant monoclonal antibody

Catalog Number: 86492-1-RR



## Basic Information

<b>Catalog Number:</b> 86492-1-RR	<b>GenBank Accession Number:</b> NM_006500.2	<b>Purification Method:</b> Protein A purification
<b>Size:</b> 100ul , Concentration: 1000 µg/ml by Nanodrop;	<b>GeneID (NCBI):</b> 4162	<b>CloneNo.:</b> 250530B11
<b>Source:</b> Rabbit	<b>UNIPROT ID:</b> P43121-1	<b>Recommended Dilutions:</b> WB: 1:5000-1:50000 IF/ICC: 1:400-1:1600
<b>Isotype:</b> IgG	<b>Full Name:</b> melanoma cell adhesion molecule	
<b>Immunogen Catalog Number:</b> EG2938	<b>Calculated MW:</b> 72 kDa	
	<b>Observed MW:</b> 120 kDa	

## Applications

<b>Tested Applications:</b> WB, IF/ICC, ELISA	<b>Positive Controls:</b>
<b>Species Specificity:</b> human	<b>WB :</b> A375 cells, HeLa cells, HepG2 cells, L02 cells, HUVEC cells <b>IF/ICC :</b> HUVEC cells,

## Background Information

CD146, also known as melanoma cell adhesion molecule (MCAM) or MUC18, originally identified as a biomarker of melanoma progression, is a transmembrane glycoprotein of 113-130 kDa, belonging to the immunoglobulin (Ig) superfamily (PMID: 8378324; 25993332). Structurally, it consists of five Ig domains, a transmembrane domain, and a cytoplasmic region. In normal adult tissue, CD146 is primarily expressed by vascular endothelium and smooth muscle. CD146 is a key cell adhesion protein in vascular endothelial cell activity and angiogenesis, and has been used as marker of circulating endothelium cells (CECs) (PMID: 19356677). In addition to the membrane-anchored form of CD146, a soluble form of CD146 (sCD146, 105 kDa) has also been found in human plasma and in the supernatant of cultured human endothelial cells (PMID: 9462829; 19229070; 16374253; 14597988).

## Storage

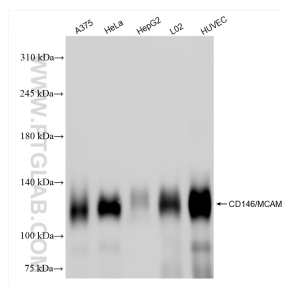
**Storage:**  
Store at -20°C. Stable for one year after shipment.  
**Storage Buffer:**  
PBS with 0.02% sodium azide and 50% glycerol, pH7.3  
**Aliquoting is unnecessary for -20°C storage**

\*\*\* 20ul sizes contain 0.1% BSA

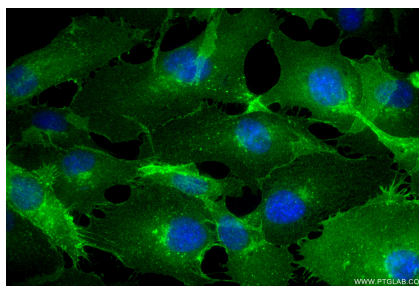
For technical support and original validation data for this product please contact:  
T: 1 (888) 4PTGLAB (1-888-478-4522) (toll free in USA), or 1(312) 455-8498 (outside USA)  
E: [proteintech@ptglab.com](mailto:proteintech@ptglab.com)  
W: [ptglab.com](http://ptglab.com)

This product is exclusively available under Proteintech Group brand and is not available to purchase from any other manufacturer.

## Selected Validation Data



Various lysates were subjected to SDS PAGE followed by western blot with 86492-1-RR (MCAM antibody) at dilution of 1:10000 incubated at room temperature for 1.5 hours.



Immunofluorescent analysis of (4% PFA) fixed HUVEC cells using CD146/MCAM antibody (86492-1-RR, Clone: 250530B11 ) at dilution of 1:800 and CoraLite® 488-Conjugated Goat Anti-Rabbit IgG(H+L) (SA00013-2).