

For Research Use Only

MCAM Recombinant monoclonal antibody, PBS Only (Capture)

Catalog Number: 86492-5-PBS



Basic Information

Catalog Number: 86492-5-PBS	GenBank Accession Number: NM_006500.2	Purification Method: Protein A purification
Size: 100ug , Concentration: 1 mg/ml by Nanodrop;	GeneID (NCBI): 4162	CloneNo.: 250530B2
Source: Rabbit	UNIPROT ID: P43121-1	
Isotype: IgG	Full Name: melanoma cell adhesion molecule	
Immunogen Catalog Number: EG2938	Calculated MW: 72 kDa	

Applications

Tested Applications:
Sandwich ELISA, Indirect ELISA

Species Specificity:
human

Product Information

86492-5-PBS targets MCAM as part of a matched antibody pair.

MP02466-2: 86492-5-PBS capture and 86492-4-PBS detection (validated in Sandwich ELISA)

Unconjugated rabbit recombinant monoclonal antibody in PBS only (BSA and azide free) storage buffer at a concentration of 1 mg/mL, ready for conjugation. Created using Proteintech's proprietary in-house recombinant technology. Recombinant production enables unrivalled batch-to-batch consistency, easy scale-up, and future security of supply.

This conjugation ready format makes antibodies ideal for use in many applications including: ELISAs, multiplex assays requiring matched pairs, mass cytometry, and multiplex imaging applications. Antibody use should be optimized by the end user for each application and assay.

Storage

Storage:
Store at -80°C.

Storage Buffer:
PBS only, pH7.3

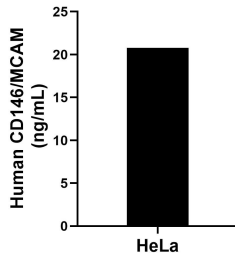
For technical support and original validation data for this product please contact:

T: 1 (888) 4PTGLAB (1-888-478-4522) (toll free in USA), or 1(312) 455-8498 (outside USA)

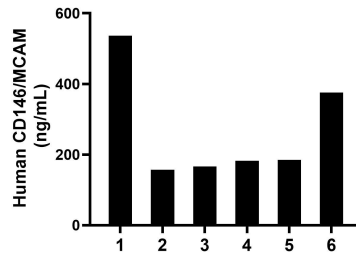
E: proteintech@ptglab.com
W: ptglab.com

This product is exclusively available under Proteintech Group brand and is not available to purchase from any other manufacturer.

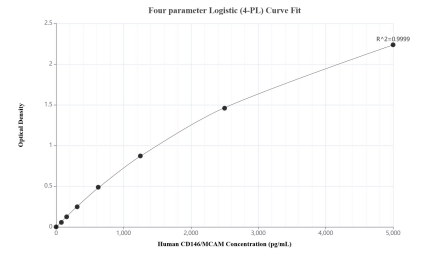
Selected Validation Data



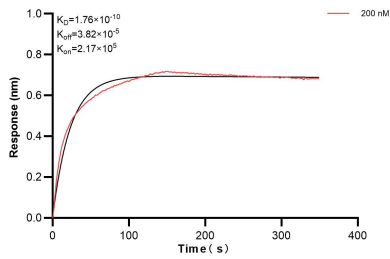
HeLa were cultured in DMEM supplemented with 10% fetal bovine serum, 2.5 mM L-glutamine, 100 U/mL penicillin, and 100 µg/mL streptomycin sulfate. An aliquot of the cell culture supernate was removed, assayed for human CD146/MCAM, and measured 20.8 ng/mL.



Plasma of six individual healthy human donors was measured. The CD146/MCAM concentration of detected samples was determined to be 267.2 ng/mL with a range of 157.5-536.7 ng/mL.



Sandwich ELISA standard curve of MP02466-2, Human CD146/MCAM Recombinant Matched Antibody Pair - PBS only. 86492-5-PBS was coated to a plate as the capture antibody and incubated with serial dilutions of standard Eg2938. 86492-4-PBS was HRP conjugated as the detection antibody. Range: 78.1-5000 pg/mL.



Biolayer interferometry (BLI) kinetic assay of 86492-5-PBS against Human MCAM was performed. The affinity constant is 0.176 nM.