

For Research Use Only

GTF2F1 Recombinant monoclonal antibody, PBS Only (Detector)

Catalog Number: 86494-1-PBS



Basic Information

Catalog Number: 86494-1-PBS	GenBank Accession Number: BC000120	Purification Method: Protein A purification
Size: 100ug , Concentration: 1 mg/ml by Nanodrop;	GeneID (NCBI): 2962	CloneNo.: 251305C6
Source: Rabbit	UNIPROT ID: P35269	
Isotype: IgG	Full Name: general transcription factor IIF, polypeptide 1, 74kDa	
Immunogen Catalog Number: AG0133	Calculated MW: 58 kDa	

Applications

Tested Applications:
Cytometric bead array, Indirect ELISA

Species Specificity:
human

Product Information

86494-1-PBS targets GTF2F1 as part of a matched antibody pair:

MP02475-1: 86494-2-PBS capture and 86494-1-PBS detection (validated in Cytometric bead array)

Unconjugated rabbit recombinant monoclonal antibody in PBS only (BSA and azide free) storage buffer at a concentration of 1 mg/mL, ready for conjugation. Created using Proteintech's proprietary in-house recombinant technology. Recombinant production enables unrivalled batch-to-batch consistency, easy scale-up, and future security of supply.

This conjugation ready format makes antibodies ideal for use in many applications including: ELISAs, multiplex assays requiring matched pairs, mass cytometry, and multiplex imaging applications. Antibody use should be optimized by the end user for each application and assay.

Storage

Storage:
Store at -80°C.

Storage Buffer:
PBS only, pH7.3

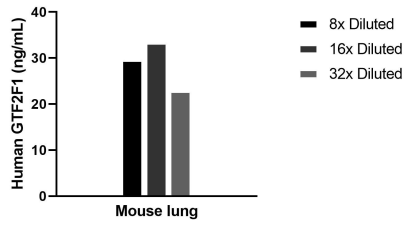
For technical support and original validation data for this product please contact:

T: 1 (888) 4PTGLAB (1-888-478-4522) (toll free in USA), or 1(312) 455-8498 (outside USA)

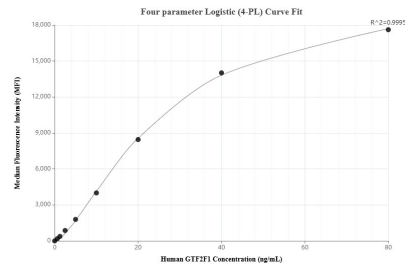
E: proteintech@ptglab.com
W: ptglab.com

This product is exclusively available under Proteintech Group brand and is not available to purchase from any other manufacturer.

Selected Validation Data



The mean GTF2F1 concentration was determined to be 28.6 ng/mL in Mouse lung tissue extract based on a 5.9 mg/mL extract load.



Cytometric bead array standard curve of MP02475-1, GTF2F1 Recombinant Matched Antibody Pair, PBS Only. Capture antibody: 86494-2-PBS. Detection antibody: 86494-1-PBS. Standard: Ag0133. Range: 0.625-80 ng/mL.