

For Research Use Only

Mouse Pla2g7 Recombinant monoclonal antibody, PBS Only (Detector)

Catalog Number: 86497-2-PBS



Basic Information

Catalog Number: 86497-2-PBS	GenBank Accession Number: NM_013737.5	Purification Method: Protein A purification
Size: 100ug , Concentration: 1 mg/ml by Nanodrop;	GeneID (NCBI): 27226	CloneNo.: 250587C12
Source: Rabbit	UNIPROT ID: Q60963	
Isotype: IgG	Full Name: phospholipase A2, group VII (platelet-activating factor acetylhydrolase, plasma)	
Immunogen Catalog Number: EG2686	Calculated MW: 49 kDa	

Applications

Tested Applications:
Sandwich ELISA, Indirect ELISA

Species Specificity:
mouse

Product Information

86497-2-PBS targets Pla2g7 as part of a matched antibody pair.

MP02685-1: 86497-3-PBS capture and 86497-2-PBS detection (validated in Sandwich ELISA)

Unconjugated rabbit recombinant monoclonal antibody in PBS only (BSA and azide free) storage buffer at a concentration of 1 mg/mL, ready for conjugation. Created using Proteintech's proprietary in-house recombinant technology. Recombinant production enables unrivalled batch-to-batch consistency, easy scale-up, and future security of supply.

This conjugation ready format makes antibodies ideal for use in many applications including: ELISAs, multiplex assays requiring matched pairs, mass cytometry, and multiplex imaging applications. Antibody use should be optimized by the end user for each application and assay.

Storage

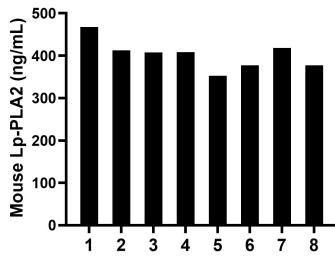
Storage:
Store at -80°C.

Storage Buffer:
PBS only, pH7.3

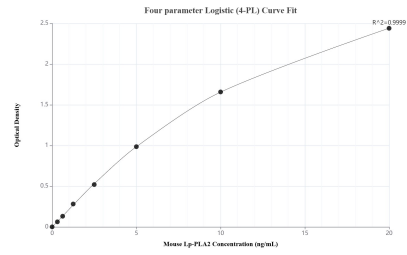
For technical support and original validation data for this product please contact:
T: 1 (888) 4PTGLAB (1-888-478-4522) (toll free in USA), or 1(312) 455-8498 (outside USA) E: proteintech@ptglab.com
W: ptglab.com

This product is exclusively available under Proteintech Group brand and is not available to purchase from any other manufacturer.

Selected Validation Data



Serum of eight mice was measured. The Lp-PLA2 concentration of detected samples was determined to be 402.70 ng/mL with a range of 352.59-467.59 ng/mL.



Sandwich ELISA standard curve of MP02685-1, Mouse Lp-PLA2 Recombinant Matched Antibody Pair - PBS only. 86497-3-PBS was coated to a plate as the capture antibody and incubated with serial dilutions of standard Eg2686. 86497-2-PBS was HRP conjugated as the detection antibody. Range: 0.313-20 ng/mL.