

For Research Use Only

USP16 Recombinant antibody, PBS Only (Detector)

Catalog Number:86498-2-PBS



Basic Information

| | | |
|--|--|---|
| Catalog Number: 86498-2-PBS | GenBank Accession Number: BC030777 | Purification Method: Protein A purification |
| Size: 100ug , Concentration: 1 mg/ml by Nanodrop; | GeneID (NCBI): 10600 | CloneNo.: 251272E8 |
| Source: Rabbit | UNIPROT ID: Q9Y5T5 | |
| Isotype: IgG | Full Name: ubiquitin specific peptidase 16 | |
| Immunogen Catalog Number: AG4981 | Calculated MW: 94 kDa | |

Applications

Tested Applications:
Sandwich ELISA, Indirect ELISA, Sample test

Species Specificity:
human

Product Information

86498-2-PBS targets USP16 as part of a matched antibody pair.

MP02643-1: 86498-3-PBS capture and 86498-2-PBS detection (validated in Sandwich ELISA)

Unconjugated rabbit recombinant monoclonal antibody in PBS only (BSA and azide free) storage buffer at a concentration of 1 mg/mL, ready for conjugation. Created using Proteintech's proprietary in-house recombinant technology. Recombinant production enables unrivalled batch-to-batch consistency, easy scale-up, and future security of supply.

This conjugation ready format makes antibodies ideal for use in many applications including: ELISAs, multiplex assays requiring matched pairs, mass cytometry, and multiplex imaging applications. Antibody use should be optimized by the end user for each application and assay.

Storage

Storage:
Store at -80°C.
Storage Buffer:
PBS only, pH7.3

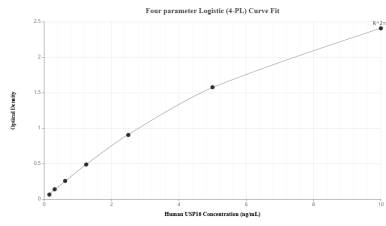
For technical support and original validation data for this product please contact:

T: 1 (888) 4PTGLAB (1-888-478-4522) (toll free
in USA), or 1(312) 455-8498 (outside USA)

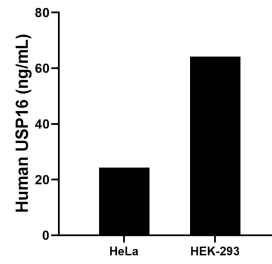
E: proteintech@ptglab.com
W: ptglab.com

This product is exclusively available under Proteintech Group brand and is not available to purchase from any other manufacturer.

Selected Validation Data



Sandwich ELISA standard curve of MP02643-1, Human USP16 Recombinant Matched Antibody Pair - PBS only. 86498-3-PBS was coated to a plate as the capture antibody and incubated with serial dilutions of standard Ag4981. 86498-2-PBS was HRP conjugated as the detection antibody. Range: 0.156-10 ng/mL



The mean USP16 concentration was determined to be 24.30 ng/mL in HeLa cell extract based on a 1.2 mg/mL extract load and 64.16 ng/mL in HEK-293 cell extract based on a 1.2 mg/mL extract load.