

For Research Use Only

# USP16 Recombinant antibody, PBS Only (Capture)

Catalog Number: 86498-3-PBS



## Basic Information

<b>Catalog Number:</b> 86498-3-PBS	<b>GenBank Accession Number:</b> BC030777	<b>Purification Method:</b> Protein A purification
<b>Size:</b> 100ug , Concentration: 1 mg/ml by Nanodrop;	<b>GeneID (NCBI):</b> 10600	<b>CloneNo.:</b> 251272E4
<b>Source:</b> Rabbit	<b>UNIPROT ID:</b> Q9Y5T5	
<b>Isotype:</b> IgG	<b>Full Name:</b> ubiquitin specific peptidase 16	
<b>Immunogen Catalog Number:</b> AG4981	<b>Calculated MW:</b> 94 kDa	

## Applications

**Tested Applications:**  
Sandwich ELISA, Indirect ELISA, Sample test

**Species Specificity:**  
human

## Product Information

86498-3-PBS targets USP16 as part of a matched antibody pair.

MP02643-1: 86498-3-PBS capture and 86498-2-PBS detection (validated in Sandwich ELISA)

Unconjugated rabbit recombinant monoclonal antibody in PBS only (BSA and azide free) storage buffer at a concentration of 1 mg/mL, ready for conjugation. Created using Proteintech's proprietary in-house recombinant technology. Recombinant production enables unrivalled batch-to-batch consistency, easy scale-up, and future security of supply.

This conjugation ready format makes antibodies ideal for use in many applications including: ELISAs, multiplex assays requiring matched pairs, mass cytometry, and multiplex imaging applications. Antibody use should be optimized by the end user for each application and assay.

## Storage

**Storage:**  
Store at -80°C.

**Storage Buffer:**  
PBS only, pH7.3

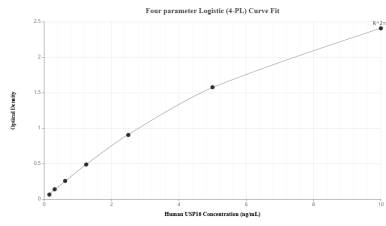
For technical support and original validation data for this product please contact:

T: 1 (888) 4PTGLAB (1-888-478-4522) (toll free  
in USA), or 1(312) 455-8498 (outside USA)

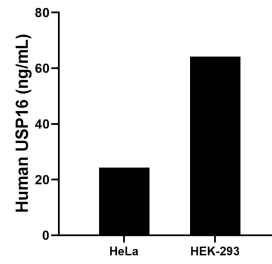
E: [proteintech@ptglab.com](mailto:proteintech@ptglab.com)  
W: [ptglab.com](http://ptglab.com)

**This product is exclusively available under Proteintech Group brand and is not available to purchase from any other manufacturer.**

## Selected Validation Data



Sandwich ELISA standard curve of MP02643-1, Human USP16 Recombinant Matched Antibody Pair - PBS only. 86498-3-PBS was coated to a plate as the capture antibody and incubated with serial dilutions of standard Ag4981. 86498-2-PBS was HRP conjugated as the detection antibody. Range: 0.156-10 ng/mL



The mean USP16 concentration was determined to be 24.30 ng/mL in HeLa cell extract based on a 1.2 mg/mL extract load and 64.16 ng/mL in HEK-293 cell extract based on a 1.2 mg/mL extract load.