

For Research Use Only

# Mouse CCL7/MCP-3 Recombinant monoclonal antibody, PBS Only (Capture)

Catalog Number: 86501-1-PBS



## Basic Information

<b>Catalog Number:</b> 86501-1-PBS	<b>GenBank Accession Number:</b> NM_013654.3	<b>Purification Method:</b> Protein A purification
<b>Size:</b> 100ug , Concentration: 1 mg/ml by Nanodrop;	<b>GeneID (NCBI):</b> 20306	<b>CloneNo.:</b> 250662A1
<b>Source:</b> Rabbit	<b>UNIPROT ID:</b> Q03366	
<b>Isotype:</b> IgG	<b>Full Name:</b> chemokine (C-C motif) ligand 7	
<b>Immunogen Catalog Number:</b> EG4626	<b>Calculated MW:</b> 11kDa	

## Applications

**Tested Applications:**  
Sandwich ELISA, Indirect ELISA

**Species Specificity:**  
mouse

## Product Information

86501-1-PBS targets CCL7/MCP-3 as part of a matched antibody pair:

MP02647-1: 86501-1-PBS capture and 86501-2-PBS detection (validated in Sandwich ELISA)

Unconjugated rabbit recombinant monoclonal antibody in PBS only (BSA and azide free) storage buffer at a concentration of 1 mg/mL, ready for conjugation. Created using Proteintech's proprietary in-house recombinant technology. Recombinant production enables unrivalled batch-to-batch consistency, easy scale-up, and future security of supply.

This conjugation ready format makes antibodies ideal for use in many applications including: ELISAs, multiplex assays requiring matched pairs, mass cytometry, and multiplex imaging applications. Antibody use should be optimized by the end user for each application and assay.

## Storage

**Storage:**  
Store at -80°C.

**Storage Buffer:**  
PBS only, pH7.3

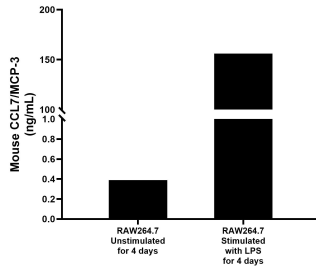
For technical support and original validation data for this product please contact:

T: 1 (888) 4PTGLAB (1-888-478-4522) (toll free in USA), or 1(312) 455-8498 (outside USA)

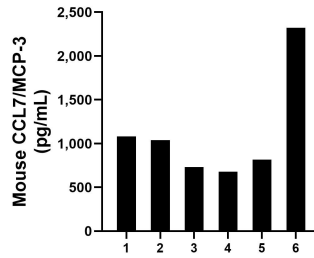
E: [proteintech@ptglab.com](mailto:proteintech@ptglab.com)  
W: [ptglab.com](http://ptglab.com)

**This product is exclusively available under Proteintech Group brand and is not available to purchase from any other manufacturer.**

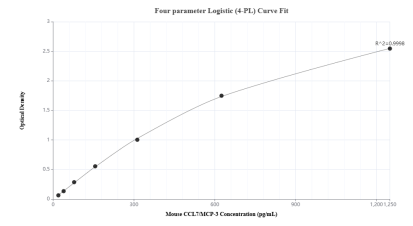
## Selected Validation Data



RAW264.7 cells were cultured unstimulated or stimulated with 1 µg/mL LPS for 4 days. The mean CCL7/MCP-3 concentration was determined to be 0.39 ng/mL in unstimulated supernatant, 155.99 ng/mL in LPS stimulated supernatant.



Serum of six mice was measured. The mouse CCL7/MCP-3 concentration of detected samples was determined to be 1,111.5 pg/mL with a range of 678.1-2,323.1 pg/mL.



Sandwich ELISA standard curve of MP02647-1, Mouse CCL7/MCP-3 Recombinant Matched Antibody Pair - PBS only. 86501-1-PBS was coated to a plate as the capture antibody and incubated with serial dilutions of standard Eg4626. 86501-2-PBS was HRP conjugated as the detection antibody. Range: 19.5-1250 pg/mL