

For Research Use Only

Mouse CCL7/MCP-3 Recombinant monoclonal antibody, PBS Only (Detector)

Catalog Number: 86501-2-PBS



Basic Information

Catalog Number: 86501-2-PBS	GenBank Accession Number: NM_013654.3	Purification Method: Protein A purification
Size: 100ug , Concentration: 1 mg/ml by Nanodrop;	GeneID (NCBI): 20306	CloneNo.: 250662G6
Source: Rabbit	UNIPROT ID: Q03366	
Isotype: IgG	Full Name: chemokine (C-C motif) ligand 7	
Immunogen Catalog Number: EG4626	Calculated MW: 11kDa	

Applications

Tested Applications:
Sandwich ELISA, Indirect ELISA

Species Specificity:
mouse

Product Information

86501-2-PBS targets CCL7/MCP-3 as part of a matched antibody pair:

MP02647-1: 86501-1-PBS capture and 86501-2-PBS detection (validated in Sandwich ELISA)

Unconjugated rabbit recombinant monoclonal antibody in PBS only (BSA and azide free) storage buffer at a concentration of 1 mg/mL, ready for conjugation. Created using Proteintech's proprietary in-house recombinant technology. Recombinant production enables unrivalled batch-to-batch consistency, easy scale-up, and future security of supply.

This conjugation ready format makes antibodies ideal for use in many applications including: ELISAs, multiplex assays requiring matched pairs, mass cytometry, and multiplex imaging applications. Antibody use should be optimized by the end user for each application and assay.

Storage

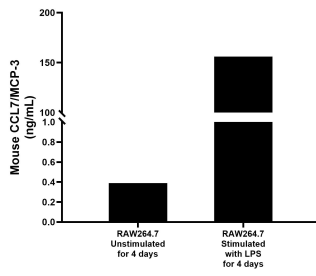
Storage:
Store at -80°C.

Storage Buffer:
PBS only, pH7.3

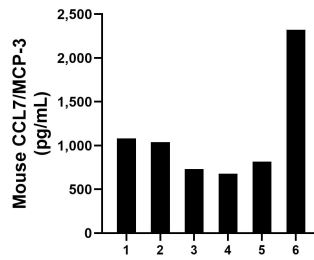
For technical support and original validation data for this product please contact:
T: 1 (888) 4PTGLAB (1-888-478-4522) (toll free in USA), or 1(312) 455-8498 (outside USA) E: proteintech@ptglab.com
W: ptglab.com

This product is exclusively available under Proteintech Group brand and is not available to purchase from any other manufacturer.

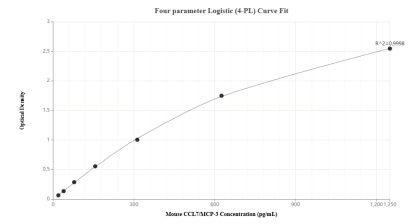
Selected Validation Data



RAW264.7 cells were cultured unstimulated or stimulated with 1 µg/mL LPS for 4 days. The mean CCL7/MCP-3 concentration was determined to be 0.39 ng/mL in unstimulated supernatant, 155.99 ng/mL in LPS stimulated supernatant.



Serum of six mice was measured. The mouse CCL7/MCP-3 concentration of detected samples was determined to be 1,111.5 pg/mL with a range of 678.1-2,323.1 pg/mL.



Sandwich ELISA standard curve of MP02647-1, Mouse CCL7/MCP-3 Recombinant Matched Antibody Pair - PBS only. 86501-1-PBS was coated to a plate as the capture antibody and incubated with serial dilutions of standard Eg4626. 86501-2-PBS was HRP conjugated as the detection antibody. Range: 19.5-1250 pg/mL