

For Research Use Only

PBX1 Recombinant monoclonal antibody

Catalog Number: 86504-3-RR



Basic Information

Catalog Number: 86504-3-RR	GenBank Accession Number: BC101578	Purification Method: Protein A purification
Size: 100ul , Concentration: 1000 µg/ml by Nanodrop;	GeneID (NCBI): 5087	CloneNo.: 251373B4
Source: Rabbit	UNIPROT ID: P40424	Recommended Dilutions: WB: 1:5000-1:50000 IHC: 1:250-1:1000 IF/ICC: 1:400-1:1600
Isotype: IgG	Full Name: pre-B-cell leukemia homeobox 1	
Immunogen Catalog Number: AG12817	Calculated MW: 430 aa, 47 kDa	
	Observed MW: 38 kDa, 47 kDa	

Applications

Tested Applications: WB, IHC, IF/ICC, ELISA	Positive Controls:
Species Specificity: human, mouse, rat	WB : HeLa cells, PC-12 cells, NIH/3T3 cells
Note-IHC: suggested antigen retrieval with TE buffer pH 9.0; (*) Alternatively, antigen retrieval may be performed with citrate buffer pH 6.0	IHC : human stomach tissue,
	IF/ICC : HeLa cells,

Background Information

PBX1, also named as Pre-B-cell leukemia transcription factor 1, is a 430 amino acid protein, which belongs to the TALE/PBX homeobox family. PBX1 is expressed in all tissues except in cells of the B and T lineage. PBX1 acts as a transcriptional activator of PF4 in complex with MEIS1. PBX1 may have a role in steroidogenesis and, subsequently, sexual development and differentiation. Isoform PBX1b as part of a PDX1:PBX1b: MEIS2b complex in pancreatic acinar cells is involved in the transcriptional activation of the ELA1 enhancer. PBX1 exists two isoforms (PBX1a and PBX1b), and molecular weight of PBX1 is 47 kDa and 38 kDa.

Storage

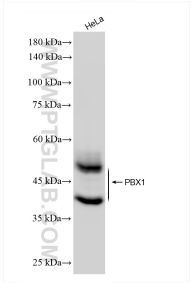
Storage:
Store at -20°C. Stable for one year after shipment.
Storage Buffer:
PBS with 0.02% sodium azide and 50% glycerol, pH7.3
Aliquoting is unnecessary for -20°C storage

*** 20ul sizes contain 0.1% BSA

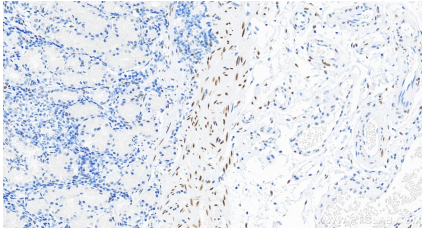
For technical support and original validation data for this product please contact:
T: 1 (888) 4PTGLAB (1-888-478-4522) (toll free in USA), or 1(312) 455-8498 (outside USA)
E: proteintech@ptglab.com
W: ptglab.com

This product is exclusively available under Proteintech Group brand and is not available to purchase from any other manufacturer.

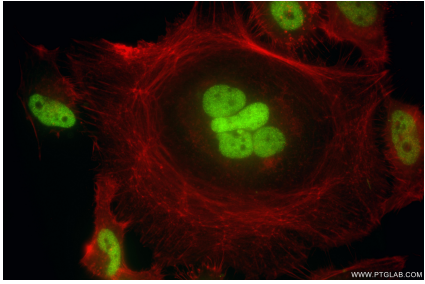
Selected Validation Data



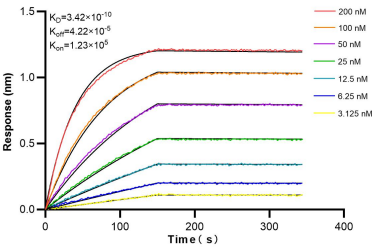
HeLa cells were subjected to SDS PAGE followed by western blot with 86504-3-RR (PBX1 antibody) at dilution of 1:10000 incubated at room temperature for 1.5 hours.



Immunohistochemical analysis of paraffin-embedded human stomach tissue slide using 86504-3-RR (PBX1 antibody) at dilution of 1:500 (under 20x lens). Heat mediated antigen retrieval with Tris-EDTA buffer (pH 9.0).



Immunofluorescent analysis of (4% PFA) fixed HeLa cells using PBX1 antibody (86504-3-RR, Clone: 251373B4) at dilution of 1:800 and CoraLite®488-Conjugated Goat Anti-Rabbit IgG(H+L) (SA00013-2), CL594-Phalloidin (red).



Biolayer interferometry (BLI) kinetic assays of 86504-3-RR against Human PBX1 were performed. The affinity constant is 0.342 nM.