

For Research Use Only

ALPI Recombinant monoclonal antibody

Catalog Number: 86505-1-RR



Basic Information

Catalog Number: 86505-1-RR	GenBank Accession Number: NM_001631.5	Purification Method: Protein A purification
Size: 100ul , Concentration: 1000 µg/ml by Nanodrop;	GeneID (NCBI): 248	CloneNo.: 251267F3
Source: Rabbit	UNIPROT ID: P09923	Recommended Dilutions: WB: 1:5000-1:50000
Isotype: IgG	Full Name: alkaline phosphatase, intestinal	
Immunogen Catalog Number: EG3033	Calculated MW: 57 kDa	
	Observed MW: 70-75 kDa	

Applications

Tested Applications: WB, ELISA	Positive Controls: WB : mouse small intestine tissue, rat small intestine tissue
Species Specificity: human, mouse, rat	

Background Information

Intestinal-type alkaline phosphatase (IAP) is one of the four human alkaline-phosphatase isoenzymes. It is synthesized by enterocytes of the small-intestinal brush border and is released into the gut lumen, blood and stool. Intestinal-type alkaline phosphatase is a constitutive, evolutionarily conserved sentinel that chemically disarms microbial toxins, orchestrates innate immunity and preserves gut homeostasis.

Storage

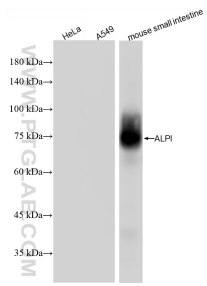
Storage:
Store at -20°C. Stable for one year after shipment.
Storage Buffer:
PBS with 0.02% sodium azide and 50% glycerol, pH7.3
Aliquoting is unnecessary for -20°C storage

*** 20ul sizes contain 0.1% BSA

For technical support and original validation data for this product please contact:
T: 1 (888) 4PTGLAB (1-888-478-4522) (toll free in USA), or 1(312) 455-8498 (outside USA) E: proteintech@ptglab.com
W: ptglab.com

This product is exclusively available under Proteintech Group brand and is not available to purchase from any other manufacturer.

Selected Validation Data



rat small intestine tissue were subjected to SDS PAGE followed by western blot with 86505-1-RR (ALPI antibody) at dilution of 1:10000 incubated at room temperature for 1.5 hours.

mouse small intestine tissue were subjected to SDS PAGE followed by western blot with 86505-1-RR (ALPI antibody) at dilution of 1:10000 incubated at room temperature for 1.5 hours.