

For Research Use Only

GSPT2 Recombinant antibody, PBS Only

Catalog Number: 86508-3-PBS



Basic Information

Catalog Number:

86508-3-PBS

Size:

100ug, Concentration: 1 mg/ml by Nanodrop;

Source:

Rabbit

Isotype:

IgG

Immunogen Catalog Number:

AG3641

GenBank Accession Number:

BC036077

GeneID (NCBI):

23708

UNIPROT ID:

Q8IYD1

Full Name:

G1 to S phase transition 2

Calculated MW:

628 aa, 69 kDa

Observed MW:

69-75 kDa

Purification Method:

Protein A purification

CloneNo.:

251224C9

Applications

Tested Applications:

WB, IF/ICC, Indirect ELISA

Species Specificity:

human, mouse, rat

Background Information

GSPT2, also named as eukaryotic peptide chain release factor GTP-binding subunit ERF3B or G1 to S phase transition protein 2 homolog, is a 628 amino acid protein, which belongs to the GTP-binding elongation factor family ERF3 subfamily. GSPT2 localizes in the cytoplasm and is highly expressed in IUEC stage II colorectal cancer (CRC). GSPT2 is involved in translation termination in response to the termination codons UAA, UAG, and UGA and may play a role as a potent stimulator of the release factor activity of ETF1. It may play a role in cell cycle progression.

Storage

Storage:

Store at -80°C.

Storage Buffer:

PBS only, pH7.3

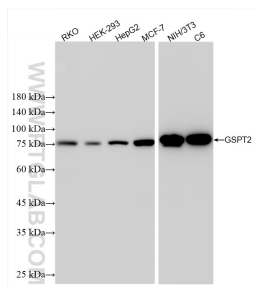
For technical support and original validation data for this product please contact:

T: 1 (888) 4PTGLAB (1-888-478-4522) (toll free in USA), or 1(312) 455-8498 (outside USA)

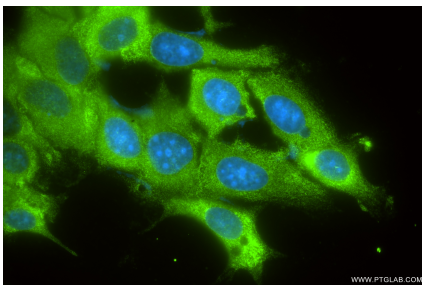
E: proteintech@ptglab.com
W: ptglab.com

This product is exclusively available under Proteintech Group brand and is not available to purchase from any other manufacturer.

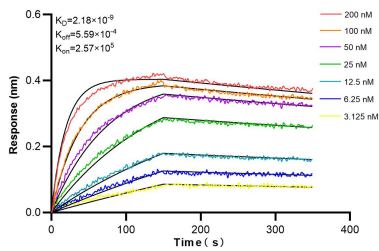
Selected Validation Data



Various lysates were subjected to SDS PAGE followed by western blot with 86508-3-RR (GSPT2 antibody) at dilution of 1:5000 incubated at room temperature for 1.5 hours. This data was developed using the same antibody clone with 86508-3-PBS in a different storage buffer formulation.



Immunofluorescent analysis of (-20°C Ethanol) fixed MCF-7 cells using GSPT2 antibody (86508-3-RR, Clone: 251224C9) at dilution of 1:500 and CoraLite® 488-Conjugated Goat Anti-Rabbit IgG(H+L) (SA00013-2). This data was developed using the same antibody clone with 86508-3-PBS in a different storage buffer formulation.



Biolayer interferometry (BLI) kinetic assays of 86508-3-RR against Human GSPT2 were performed. The affinity constant is 2.18 nM.