

For Research Use Only

GSPT2 Recombinant antibody

Catalog Number: 86508-3-RR



Basic Information

Catalog Number: 86508-3-RR	GenBank Accession Number: BC036077	Purification Method: Protein A purification
Size: 100ul , Concentration: 1000 µg/ml by Nanodrop;	GeneID (NCBI): 23708	CloneNo.: 251224C9
Source: Rabbit	UNIPROT ID: Q8IYD1	Recommended Dilutions: WB: 1:2000-1:10000 IF/ICC: 1:250-1:1000
Isotype: IgG	Full Name: G1 to S phase transition 2	
Immunogen Catalog Number: AG3641	Calculated MW: 628 aa, 69 kDa	
	Observed MW: 69-75 kDa	

Applications

Tested Applications: WB, IF/ICC, ELISA	Positive Controls:
Species Specificity: human, mouse, rat	WB : RKO cells, HEK-293 cells, HepG2 cells, MCF-7 cells, NIH/3T3 cells, C6 cells
	IF/ICC : MCF-7 cells,

Background Information

GSPT2, also named as eukaryotic peptide chain release factor GTP-binding subunit ERF3B or G1 to S phase transition protein 2 homolog, is a 628 amino acid protein, which belongs to the GTP-binding elongation factor family ERF3 subfamily. GSPT2 localizes in the cytoplasm and is highly expressed in IUCR stage II colorectal cancer (CRC). GSPT2 is involved in translation termination in response to the termination codons UAA, UAG, and UGA and may play a role as a potent stimulator of the release factor activity of ETF1. It may play a role in cell cycle progression.

Storage

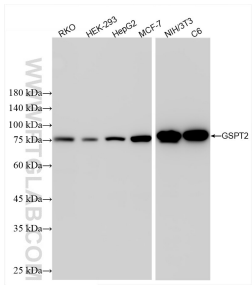
Storage:
Store at -20°C. Stable for one year after shipment.
Storage Buffer:
PBS with 0.02% sodium azide and 50% glycerol, pH7.3
Aliquoting is unnecessary for -20°C storage

*** 20ul sizes contain 0.1% BSA

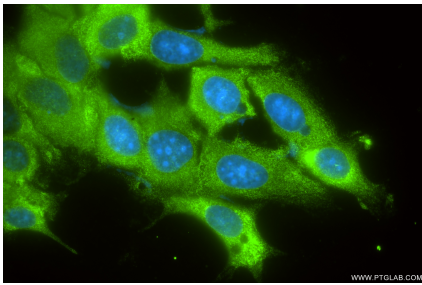
For technical support and original validation data for this product please contact:
T: 1 (888) 4PTGLAB (1-888-478-4522) (toll free in USA), or 1(312) 455-8498 (outside USA)
E: proteintech@ptglab.com
W: ptglab.com

This product is exclusively available under Proteintech Group brand and is not available to purchase from any other manufacturer.

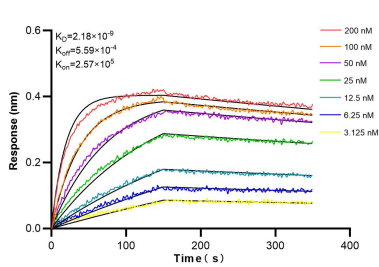
Selected Validation Data



Various lysates were subjected to SDS PAGE followed by western blot with 86508-3-RR (GSPT2 antibody) at dilution of 1:5000 incubated at room temperature for 1.5 hours.



Immunofluorescent analysis of (-20°C Ethanol) fixed MCF-7 cells using GSPT2 antibody (86508-3-RR, Clone: 251224C9) at dilution of 1:500 and CoraLite® 488-Conjugated Goat Anti-Rabbit IgG(H+L) (SA00013-2).



Biolayer interferometry (BLI) kinetic assays of 86508-3-RR against Human GSPT2 were performed. The affinity constant is 2.18 nM.