

For Research Use Only

LRRC8D Recombinant antibody

Catalog Number: 86510-1-RR



Basic Information

Catalog Number: 86510-1-RR	GenBank Accession Number: BC024159	Purification Method: Protein A purification
Size: 100ul , Concentration: 1000 µg/ml by Nanodrop;	GeneID (NCBI): 55144	CloneNo.: 251257E6
Source: Rabbit	UNIPROT ID: Q7L1W4	Recommended Dilutions: WB: 1:5000-1:50000 IF/ICC: 1:200-1:800
Isotype: IgG	Full Name: leucine rich repeat containing 8 family, member D	
Immunogen Catalog Number: AG2138	Calculated MW: 858 aa, 98 kDa	
	Observed MW: 98-120 kDa	

Applications

Tested Applications: WB, IF/ICC, ELISA	Positive Controls:
Species Specificity: human, rat	WB : HEK-293 cells, HaCaT cells, rat brain tissue IF/ICC : HEK-293 cells,

Background Information

LRRC8D (or LRRC5L) gene encodes a 98-kDa multi-pass membrane protein leucine-rich repeat-containing protein 8D, which contains 13 LRRs (leucine-rich repeats). The molecular function of this protein is so far not well understood. Recently, LRRC8D gene was found to be up-regulated after IL-2 deprivation in immortalised Interleukin-2(IL-2)-dependent human T cells, indicating a possible involvement of LRRC8D in cancer development. This LRRC8D antibody can't cross-recognize LRRC8A.

Storage

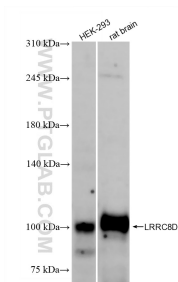
Storage:
Store at -20°C. Stable for one year after shipment.
Storage Buffer:
PBS with 0.02% sodium azide and 50% glycerol, pH7.3
Aliquoting is unnecessary for -20°C storage

*** 20ul sizes contain 0.1% BSA

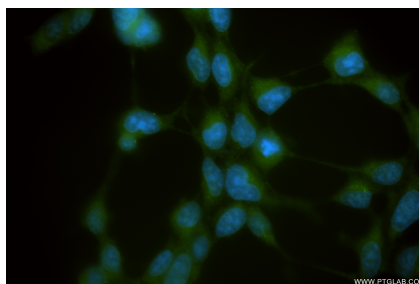
For technical support and original validation data for this product please contact:
T: 1 (888) 4PTGLAB (1-888-478-4522) (toll free in USA), or 1(312) 455-8498 (outside USA)
E: proteintech@ptglab.com
W: ptglab.com

This product is exclusively available under Proteintech Group brand and is not available to purchase from any other manufacturer.

Selected Validation Data



Various lysates were subjected to SDS PAGE followed by western blot with 86510-1-RR (LRRRC8D antibody) at dilution of 1:10000 incubated at room temperature for 1.5 hours.



Immunofluorescent analysis of (-20°C Ethanol) fixed HEK-293 cells using LRRRC8D antibody (86510-1-RR, Clone: 251257E6) at dilution of 1:400 and CoraLite® 488-Conjugated Goat Anti-Rabbit IgG(H+L) (SA00013-2).