

For Research Use Only

CPSF2 Recombinant monoclonal antibody, PBS Only (Detector)

Catalog Number: 86513-1-PBS



Basic Information

Catalog Number: 86513-1-PBS	GenBank Accession Number: BC070095	Purification Method: Protein A purification
Size: 100ug , Concentration: 1 mg/ml by Nanodrop;	GeneID (NCBI): 53981	CloneNo.: 251387A8
Source: Rabbit	UNIPROT ID: Q9P2I0	
Isotype: IgG	Full Name: cleavage and polyadenylation specific factor 2, 100kDa	
Immunogen Catalog Number: AG11950	Calculated MW: 782 aa, 88 kDa	

Applications

Tested Applications:
Cytometric bead array, Indirect ELISA

Species Specificity:
human

Product Information

86513-1-PBS targets CPSF2 as part of a matched antibody pair.

MP02482-1: 86513-2-PBS capture and 86513-1-PBS detection (validated in Cytometric bead array)

Unconjugated rabbit recombinant monoclonal antibody in PBS only (BSA and azide free) storage buffer at a concentration of 1 mg/mL, ready for conjugation. Created using Proteintech's proprietary in-house recombinant technology. Recombinant production enables unrivalled batch-to-batch consistency, easy scale-up, and future security of supply.

This conjugation ready format makes antibodies ideal for use in many applications including: ELISAs, multiplex assays requiring matched pairs, mass cytometry, and multiplex imaging applications. Antibody use should be optimized by the end user for each application and assay.

Storage

Storage:
Store at -80°C.

Storage Buffer:
PBS only, pH7.3

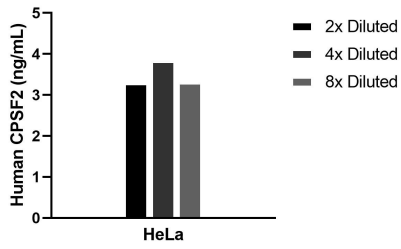
For technical support and original validation data for this product please contact:

T: 1 (888) 4PTGLAB (1-888-478-4522) (toll free in USA), or 1(312) 455-8498 (outside USA)

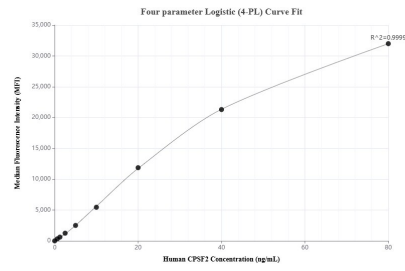
E: proteintech@ptglab.com
W: ptglab.com

This product is exclusively available under Proteintech Group brand and is not available to purchase from any other manufacturer.

Selected Validation Data



The mean CPSF2 concentration was determined to be 3.5 ng/mL in HeLa cell extract based on a 1.2 mg/mL extract load.



Cytometric bead array standard curve of MP02482-1, CPSF2 Recombinant Matched Antibody Pair, PBS Only. Capture antibody: 86513-2-PBS. Detection antibody: 86513-1-PBS. Standard: Ag11950. Range: 0.625-80 ng/mL.