

For Research Use Only

# CPSF2 Recombinant antibody, PBS Only

Catalog Number: 86513-3-PBS



## Basic Information

<b>Catalog Number:</b> 86513-3-PBS	<b>GenBank Accession Number:</b> BC070095	<b>Purification Method:</b> Protein A purification
<b>Size:</b> 100ug , Concentration: 1 mg/ml by Nanodrop;	<b>GeneID (NCBI):</b> 53981	<b>CloneNo.:</b> 251387H5
<b>Source:</b> Rabbit	<b>UNIPROT ID:</b> Q9P2I0	
<b>Isotype:</b> IgG	<b>Full Name:</b> cleavage and polyadenylation specific factor 2, 100kDa	
<b>Immunogen Catalog Number:</b> AG11950	<b>Calculated MW:</b> 782 aa, 88 kDa	
	<b>Observed MW:</b> 110 kDa	

## Applications

**Tested Applications:**  
WB, IF/ICC, Indirect ELISA

**Species Specificity:**  
human, mouse, rat

## Background Information

Cleavage and Polyadenylation Specificity Factor Subunit 2 (CPSF2) is a critical component of the mRNA 3' end processing machinery, playing a pivotal role in the cleavage and polyadenylation of pre-mRNA. This process is essential for the stability, nuclear export, and translation efficiency of mRNA, making CPSF2 a key player in gene expression regulation. Recent studies have highlighted the significance of CPSF2 in various diseases, particularly cancer. It's reported that in papillary thyroid carcinoma (PTC), negative expression of CPSF2 has been associated with poorer clinical outcomes, including higher rates of cervical lymph node metastasis, distant metastasis, and reduced recurrence-free survival. (PMID:26148673)

## Storage

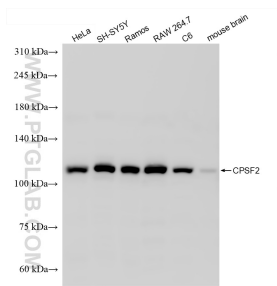
**Storage:**  
Store at -80°C.

**Storage Buffer:**  
PBS only, pH7.3

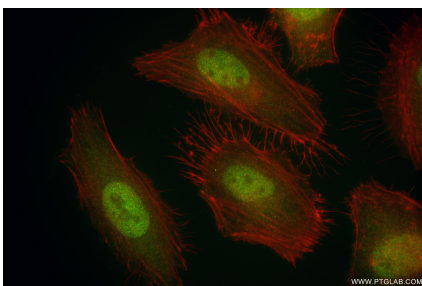
For technical support and original validation data for this product please contact:  
T: 1 (888) 4PTGLAB (1-888-478-4522) (toll free in USA), or 1(312) 455-8498 (outside USA)  
E: [proteintech@ptglab.com](mailto:proteintech@ptglab.com)  
W: [ptglab.com](http://ptglab.com)

This product is exclusively available under Proteintech Group brand and is not available to purchase from any other manufacturer.

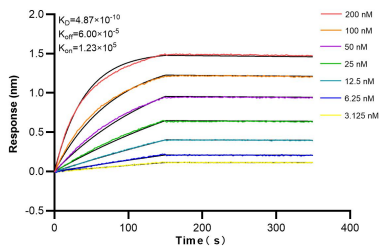
## Selected Validation Data



Various lysates were subjected to SDS PAGE followed by western blot with 86513-3-RR (CPSF2 antibody) at dilution of 1:5000 incubated at room temperature for 1.5 hours. This data was developed using the same antibody clone with 86513-3-PBS in a different storage buffer formulation.



Immunofluorescent analysis of (4% PFA) fixed HeLa cells using CPSF2 antibody (86513-3-RR, Clone: 251387H5) at dilution of 1:200 and CoraLite® 488-Conjugated Goat Anti-Rabbit IgG(H+L) (SA00013-2), CL594-Phalloidin (red). This data was developed using the same antibody clone with 86513-3-PBS in a different storage buffer formulation.



Biolayer interferometry (BLI) kinetic assays of 86513-3-RR against Human CPSF2 were performed. The affinity constant is 0.487 nM.