

For Research Use Only

CPSF2 Recombinant antibody

Catalog Number: 86513-3-RR



Basic Information

Catalog Number: 86513-3-RR	GenBank Accession Number: BC070095	Purification Method: Protein A purification
Size: 100ul , Concentration: 1000 µg/ml by Nanodrop;	GeneID (NCBI): 53981	CloneNo.: 251387H5
Source: Rabbit	UNIPROT ID: Q9P2I0	Recommended Dilutions: WB: 1:2000-1:10000 IF/ICC: 1:50-1:500
Isotype: IgG	Full Name: cleavage and polyadenylation specific factor 2, 100kDa	
Immunogen Catalog Number: AG11950	Calculated MW: 782 aa, 88 kDa	
	Observed MW: 110 kDa	

Applications

Tested Applications: WB, IF/ICC, ELISA	Positive Controls:
Species Specificity: human, mouse, rat	WB : HeLa cells, SH-SY5Y cells, Ramos cells, RAW 264.7 cells, C6 cells, mouse brain tissue IF/ICC : HeLa cells,

Background Information

Cleavage and Polyadenylation Specificity Factor Subunit 2 (CPSF2) is a critical component of the mRNA 3' end processing machinery, playing a pivotal role in the cleavage and polyadenylation of pre-mRNA. This process is essential for the stability, nuclear export, and translation efficiency of mRNA, making CPSF2 a key player in gene expression regulation. Recent studies have highlighted the significance of CPSF2 in various diseases, particularly cancer. It's reported that in papillary thyroid carcinoma (PTC), negative expression of CPSF2 has been associated with poorer clinical outcomes, including higher rates of cervical lymph node metastasis, distant metastasis, and reduced recurrence-free survival. (PMID:26148673)

Storage

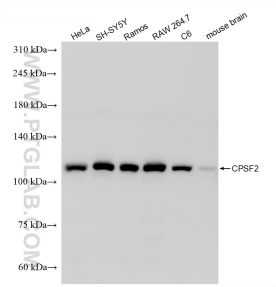
Storage:
Store at -20°C. Stable for one year after shipment.
Storage Buffer:
PBS with 0.02% sodium azide and 50% glycerol, pH7.3
Aliquoting is unnecessary for -20°C storage

*** 20ul sizes contain 0.1% BSA

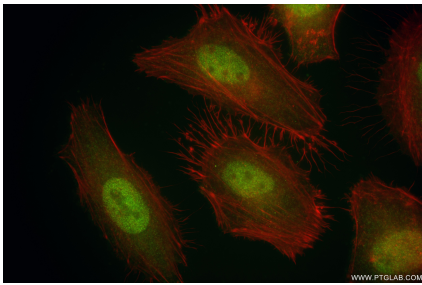
For technical support and original validation data for this product please contact:
T: 1 (888) 4PTGLAB (1-888-478-4522) (toll free in USA), or 1(312) 455-8498 (outside USA)
E: proteintech@ptglab.com
W: ptglab.com

This product is exclusively available under Proteintech Group brand and is not available to purchase from any other manufacturer.

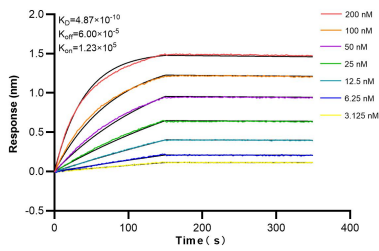
Selected Validation Data



Various lysates were subjected to SDS PAGE followed by western blot with 86513-3-RR (CPSF2 antibody) at dilution of 1:5000 incubated at room temperature for 1.5 hours.



Immunofluorescent analysis of (4% PFA) fixed HeLa cells using CPSF2 antibody (86513-3-RR, Clone: 251387H5) at dilution of 1:200 and CoraLite® 488-Conjugated Goat Anti-Rabbit IgG(H+L) (SA00013-2), CL594-Phalloidin (red).



Biolayer interferometry (BLI) kinetic assays of 86513-3-RR against Human CPSF2 were performed. The affinity constant is 0.487 nM.