

For Research Use Only

CWF19L2 Recombinant monoclonal antibody, PBS Only (Capture)

Catalog Number: 86514-2-PBS



Basic Information

Catalog Number: 86514-2-PBS	GenBank Accession Number: BC110442	Purification Method: Protein A purification
Size: 100ug , Concentration: 1 mg/ml by Nanodrop;	GeneID (NCBI): 143884	CloneNo.: 251365A12
Source: Rabbit	UNIPROT ID: Q2TBEO	
Isotype: IgG	Full Name: CWF19-like 2, cell cycle control (S. pombe)	
Immunogen Catalog Number: AG21738	Calculated MW: 894 aa, 104 kDa	

Applications

Tested Applications:
Cytometric bead array, Indirect ELISA, Sample test

Species Specificity:
human

Product Information

86514-2-PBS targets CWF19L2 as part of a matched antibody pair:

MP02484-1: 86514-2-PBS capture and 86514-1-PBS detection (validated in Cytometric bead array)

Unconjugated rabbit recombinant monoclonal antibody in PBS only (BSA and azide free) storage buffer at a concentration of 1 mg/mL, ready for conjugation. Created using Proteintech's proprietary in-house recombinant technology. Recombinant production enables unrivalled batch-to-batch consistency, easy scale-up, and future security of supply.

This conjugation ready format makes antibodies ideal for use in many applications including: ELISAs, multiplex assays requiring matched pairs, mass cytometry, and multiplex imaging applications. Antibody use should be optimized by the end user for each application and assay.

Storage

Storage:
Store at -80°C.

Storage Buffer:
PBS only, pH7.3

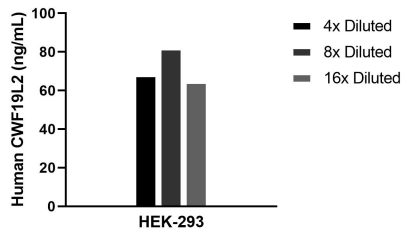
For technical support and original validation data for this product please contact:

T: 1 (888) 4PTGLAB (1-888-478-4522) (toll free in USA), or 1(312) 455-8498 (outside USA)

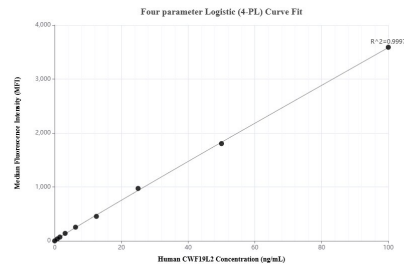
E: proteintech@ptglab.com
W: ptglab.com

This product is exclusively available under Proteintech Group brand and is not available to purchase from any other manufacturer.

Selected Validation Data



The mean CWF 19L2 concentration was determined to be 71.4 ng/mL in HEK-293 cell extract based on a 1.1 mg/mL extract load.



Cytometric bead array standard curve of MPO2484-1, CWF19L2 Recombinant Matched Antibody Pair, PBS Only. Capture antibody: 86514-2-PBS. Detection antibody: 86514-1-PBS. Standard: Ag21738. Range: 0.781-100 ng/mL