

For Research Use Only

KLK11 Recombinant monoclonal antibody

Catalog Number: 86517-1-RR



Basic Information

Catalog Number: 86517-1-RR	GenBank Accession Number: NM_144947.2	Purification Method: Protein A purification
Size: 100ul , Concentration: 1000 µg/ml by Nanodrop;	GeneID (NCBI): 11012	CloneNo.: 251323F6
Source: Rabbit	UNIPROT ID: Q9UBX7-2	Recommended Dilutions: WB: 1:5000-1:50000
Isotype: IgG	Full Name: kallikrein-related peptidase 11	
Immunogen Catalog Number: EG2890	Calculated MW: 31 kDa	
	Observed MW: 30-40 kDa	

Applications

Tested Applications: WB, ELISA	Positive Controls: WB : TT cells,
Species Specificity: human	

Background Information

KLK11(Kallikrein-11) is also named as PRSS20, TLSP and belongs to the peptidase S1 family and Kallikrein subfamily. It is a multifunctional protease cleaving several substrates for kallikrein and trypsin and involved in normal physiology processes in bronchus. This full length protein has a signal peptide, a propeptide and four glycosylation sites. It has 4 isoforms produced by alternative splicing with the molecular weight of 31 kDa, 27 kDa, 34 kDa and 30 kDa.

Storage

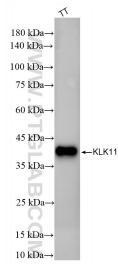
Storage:
Store at -20°C. Stable for one year after shipment.
Storage Buffer:
PBS with 0.02% sodium azide and 50% glycerol, pH7.3
Aliquoting is unnecessary for -20°C storage

*** 20ul sizes contain 0.1% BSA

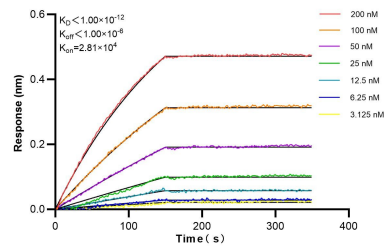
For technical support and original validation data for this product please contact:
T: 1 (888) 4PTGLAB (1-888-478-4522) (toll free in USA), or 1(312) 455-8498 (outside USA)
E: proteintech@ptglab.com
W: ptglab.com

This product is exclusively available under Proteintech Group brand and is not available to purchase from any other manufacturer.

Selected Validation Data



TT cells were subjected to SDS PAGE followed by western blot with 86517-1-RR (KLK11 antibody) at dilution of 1:10000 incubated at room temperature for 1.5 hours.



Biolayer interferometry (BLI) kinetic assays of 86517-1-RR against Human KLK11 were performed. The affinity constant is below 1 pM.