

For Research Use Only

ALDH1A2 Recombinant antibody, PBS Only

Catalog Number: 86518-1-PBS



Basic Information

Catalog Number: 86518-1-PBS	GenBank Accession Number: BC030589	Purification Method: Protein A purification
Size: 100ug, Concentration: 1 mg/ml by Nanodrop;	GeneID (NCBI): 8854	CloneNo.: 251371D10
Source: Rabbit	UNIPROT ID: O94788	
Isotype: IgG	Full Name: aldehyde dehydrogenase 1 family, member A2	
Immunogen Catalog Number: AG5062	Calculated MW: 518 aa, 57 kDa	
	Observed MW: 53-57 kDa	

Applications

Tested Applications:
WB, IF/ICC, Indirect ELISA

Species Specificity:
human, mouse, rat

Background Information

ALDH1A2(aldehyde dehydrogenase family 1 member A2) is also named as RALDH2(retinal dehydrogenase 2) and belongs to the aldehyde dehydrogenase family. It is a cytosolic homotetramer(56.7 kDa subunits) exhibiting complex expression patterns throughout embryonic development. ALDH1A2 plays a role in retinoid metabolism during embryonic development where it is considered to be the major retinoic acid-synthesizing enzyme during early embryogenesis(PMID:20735668). Its expression is reduced in primary prostate tumors compared with normal prostate tissue suggested that it is normally expressed in the epithelial compartment of prostate tissue(PMID:16166285).It has 2 isoforms produced by alternative splicing.

Storage

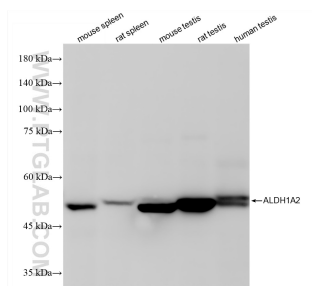
Storage:
Store at -80°C.

Storage Buffer:
PBS only, pH7.3

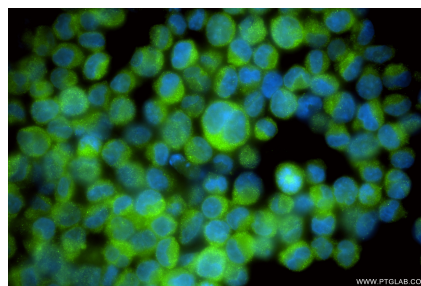
For technical support and original validation data for this product please contact:
T: 1 (888) 4PTGLAB (1-888-478-4522) (toll free in USA), or 1(312) 455-8498 (outside USA)
E: proteintech@ptglab.com
W: ptglab.com

This product is exclusively available under Proteintech Group brand and is not available to purchase from any other manufacturer.

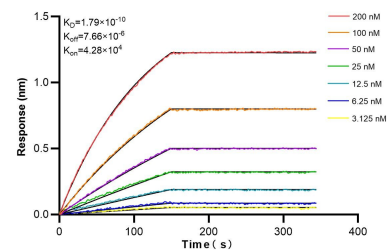
Selected Validation Data



Various lysates were subjected to SDS PAGE followed by western blot with 86518-1-RR (ALDH1A2 antibody) at dilution of 1:10000 incubated at room temperature for 1.5 hours. This data was developed using the same antibody clone with 86518-1-PBS in a different storage buffer formulation.



Immunofluorescent analysis of (4% PFA) fixed K-562 cells using ALDH1A2 antibody (86518-1-RR, Clone: 251371D10) at dilution of 1:500 and CoraLite® 488-Conjugated Goat Anti-Rabbit IgG(H+L) (SA00013-2). This data was developed using the same antibody clone with 86518-1-PBS in a different storage buffer formulation.



Biolayer interferometry (BLI) kinetic assays of 86518-1-RR against Human ALDH1A2 were performed. The affinity constant is 0.179 nM.