

For Research Use Only

RPL23 Recombinant antibody

Catalog Number: 86520-1-RR



Basic Information

Catalog Number:

86520-1-RR

Size:

100ul , Concentration: 1000 µg/ml by Nanodrop;

Source:

Rabbit

Isotype:

IgG

Immunogen Catalog Number:

AG9120

GenBank Accession Number:

BC010114

GeneID (NCBI):

9349

UNIPROT ID:

P62829

Full Name:

ribosomal protein L23

Calculated MW:

140 aa, 15 kDa

Observed MW:

15 kDa

Purification Method:

Protein A purification

CloneNo.:

251372C7

Recommended Dilutions:

WB: 1:5000-1:50000

IF/ICC: 1:150-1:600

Applications

Tested Applications:

WB, ELISA

Species Specificity:

human, mouse, rat

Positive Controls:

WB : HeLa cells, HEK-293 cells, Jurkat cells, BxPC-3 cells, NIH/3T3 cells, PC-12 cells

IF/ICC : HeLa cells,

Storage

Storage:

Store at -20°C. Stable for one year after shipment.

Storage Buffer:

PBS with 0.02% sodium azide and 50% glycerol, pH7.3

Aliquoting is unnecessary for -20°C storage

*** 20ul sizes contain 0.1% BSA

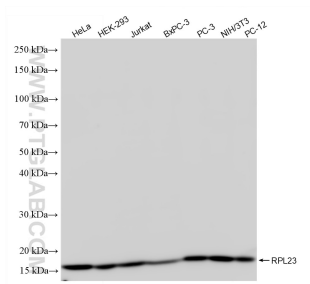
For technical support and original validation data for this product please contact:

T: 1 (888) 4PTGLAB (1-888-478-4522) (toll free in USA), or 1(312) 455-8498 (outside USA)

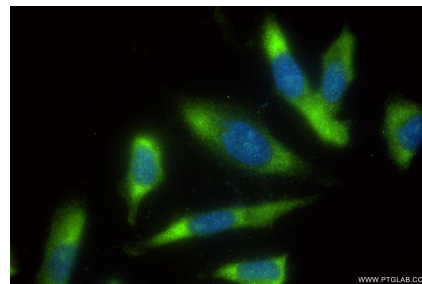
E: proteintech@ptglab.com
W: ptglab.com

This product is exclusively available under Proteintech Group brand and is not available to purchase from any other manufacturer.

Selected Validation Data



Various lysates were subjected to SDS PAGE followed by western blot with 86520-1-RR (RPL23 antibody) at dilution of 1:10000 incubated at room temperature for 1.5 hours.



Immunofluorescent analysis of (-20°C Ethanol) fixed HeLa cells using RPL23 antibody (86520-1-RR, Clone: 251372C7) at dilution of 1:300 and CoraLite® 488-Conjugated Goat Anti-Rabbit IgG(H+L) (SA00013-2).