

For Research Use Only

# SPAM1 Recombinant antibody

Catalog Number: 86527-1-RR



## Basic Information

Catalog Number:

86527-1-RR

Size:

100ul , Concentration: 1000 µg/ml by Nanodrop;

Source:

Rabbit

Isotype:

IgG

Immunogen Catalog Number:

AG1682

GenBank Accession Number:

BC026163

GeneID (NCBI):

6677

UNIPROT ID:

P38567

Full Name:

SPAM1

Calculated MW:

58 kDa

Observed MW:

60 kDa

Purification Method:

Protein A purification

CloneNo.:

251297F4

Recommended Dilutions:

WB: 1:2000-1:10000

## Applications

Tested Applications:

WB, ELISA

Species Specificity:

human

Positive Controls:

WB : PC-3 cells, MCF-7 cells, SH-SY5Y cells, A-673 cells, human testis tissue

## Background Information

SPAM1(sperm adhesion molecule 1), also named as Hyal PH20, belongs to the glycosyl hydrolase 56 family. SPAM1 is a GPI-anchored enzyme present on both the sperm plasma membrane and acrosomal membrane. It is involved in sperm-egg adhesion.

## Storage

Storage:

Store at -20°C. Stable for one year after shipment.

Storage Buffer:

PBS with 0.02% sodium azide and 50% glycerol, pH7.3

Aliquoting is unnecessary for -20°C storage

\*\*\* 20ul sizes contain 0.1% BSA

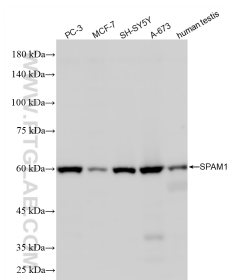
For technical support and original validation data for this product please contact:

T: 1 (888) 4PTGLAB (1-888-478-4522) (toll free in USA), or 1(312) 455-8498 (outside USA)

E: [proteintech@ptglab.com](mailto:proteintech@ptglab.com)  
W: [ptglab.com](http://ptglab.com)

This product is exclusively available under Proteintech Group brand and is not available to purchase from any other manufacturer.

## Selected Validation Data



Various lysates were subjected to SDS PAGE followed by western blot with 86527-1-RR (SPAM1 antibody) at dilution of 1:5000 incubated at room temperature for 1.5 hours.