

For Research Use Only

RECQL4 Recombinant monoclonal antibody, PBS Only

Catalog Number: 86529-2-PBS



Basic Information

Catalog Number: 86529-2-PBS	GenBank Accession Number: BC013277	Purification Method: Protein A purification
Size: 100ug, Concentration: 1 mg/ml by Nanodrop;	GeneID (NCBI): 9401	CloneNo.: 251312D3
Source: Rabbit	UNIPROT ID: O94761	
Isotype: IgG	Full Name: RecQ protein-Like 4	
Immunogen Catalog Number: AG10707	Calculated MW: 1208 aa, 133 kDa	
	Observed MW: 140-150 kDa	

Applications

Tested Applications:
WB, IF/ICC, Indirect ELISA

Species Specificity:
human

Background Information

RECQ protein-like 4 (RECQL4), which has helicase domains contain 7 consensus motifs in the middle, is a gene responsible for Werner syndrome and Bloom syndrome. It forms a stable complex with UBR1 and UBR2, which has a DNA-stimulated ATPase activity. RECQL4 may involve in repairment of DNA damage by interaction with APE1 and FEN1, key participants in base excision repair. This is a rabbit polyclonal antibody raised against part of C-terminal of RECQL4 of human origin. The calculated molecular weight of RECQL4 is 133 kDa, but the modified RECQL4 protein is about 145-150 kDa.

Storage

Storage:
Store at -80°C.

Storage Buffer:
PBS only, pH7.3

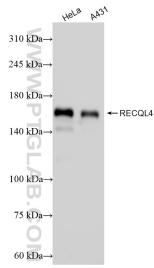
For technical support and original validation data for this product please contact:

T: 1 (888) 4PTGLAB (1-888-478-4522) (toll free in USA), or 1(312) 455-8498 (outside USA)

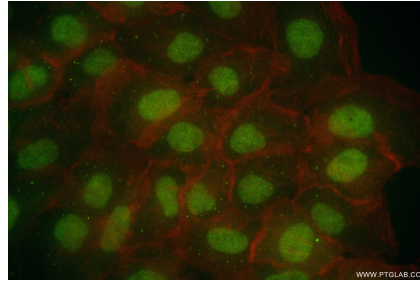
E: proteintech@ptglab.com
W: ptglab.com

This product is exclusively available under Proteintech Group brand and is not available to purchase from any other manufacturer.

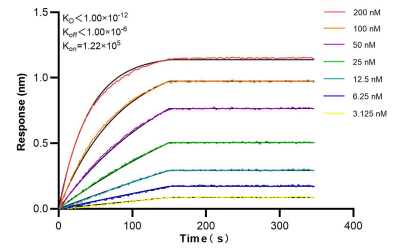
Selected Validation Data



Various lysates were subjected to SDS PAGE followed by western blot with 86529-2-RR (RECQL4 antibody) at dilution of 1:5000 incubated at room temperature for 1.5 hours. This data was developed using the same antibody clone with 86529-2-PBS in a different storage buffer formulation.



Immunofluorescent analysis of (4% PFA) fixed A431 cells using RECQL4 antibody (86529-2-RR, Clone: 251312D3) at dilution of 1:200 and CoraLite® 488-Conjugated Goat Anti-Rabbit IgG(H+L) (SA00013-2), CL594-Phalloidin (red). This data was developed using the same antibody clone with 86529-2-PBS in a different storage buffer formulation.



Biolayer interferometry (BLI) kinetic assays of 86529-2-RR against Human RECQL4 were performed. The affinity constant is below 1 pM.