

For Research Use Only

# RECQL4 Recombinant monoclonal antibody

Catalog Number: 86529-2-RR



## Basic Information

<b>Catalog Number:</b> 86529-2-RR	<b>GenBank Accession Number:</b> BC013277	<b>Purification Method:</b> Protein A purification
<b>Size:</b> 100ul , Concentration: 1000 µg/ml by Nanodrop;	<b>GeneID (NCBI):</b> 9401	<b>CloneNo.:</b> 251312D3
<b>Source:</b> Rabbit	<b>UNIPROT ID:</b> O94761	<b>Recommended Dilutions:</b> WB: 1:2000-1:10000 IF/ICC: 1:50-1:500
<b>Isotype:</b> IgG	<b>Full Name:</b> RecQ protein-like 4	
<b>Immunogen Catalog Number:</b> AG10707	<b>Calculated MW:</b> 1208 aa, 133 kDa	
	<b>Observed MW:</b> 140-150 kDa	

## Applications

<b>Tested Applications:</b> WB, IF/ICC, ELISA	<b>Positive Controls:</b> WB : HeLa cells, A431 cells
<b>Species Specificity:</b> human	<b>IF/ICC :</b> A431 cells,

## Background Information

RECQ protein-like 4 (RECQL4), which has helicase domains contain 7 consensus motifs in the middle, is a gene responsible for Werner syndrome and Bloom syndrome. It forms a stable complex with UBR1 and UBR2, which has a DNA-stimulated ATPase activity. RECQL4 may involve in repairment of DNA damage by interaction with APE1 and FEN1, key participants in base excision repair. The calculated molecular weight of RECQL4 is 133 kDa, but the modified RECQL4 protein is about 145-150 kDa.

## Storage

**Storage:**  
Store at -20°C. Stable for one year after shipment.  
**Storage Buffer:**  
PBS with 0.02% sodium azide and 50% glycerol, pH7.3  
Aliquoting is unnecessary for -20°C storage

\*\*\* 20ul sizes contain 0.1% BSA

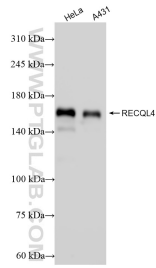
For technical support and original validation data for this product please contact:

T: 1 (888) 4PTGLAB (1-888-478-4522) (toll free in USA), or 1(312) 455-8498 (outside USA)

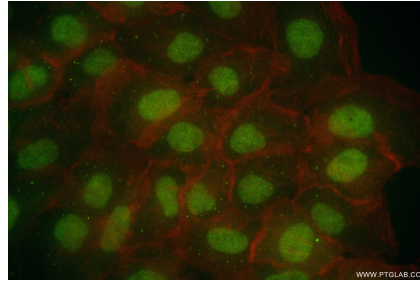
E: [proteintech@ptglab.com](mailto:proteintech@ptglab.com)  
W: [ptglab.com](http://ptglab.com)

This product is exclusively available under Proteintech Group brand and is not available to purchase from any other manufacturer.

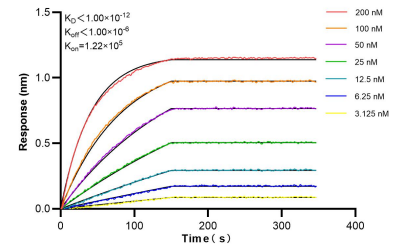
## Selected Validation Data



Various lysates were subjected to SDS PAGE followed by western blot with 86529-2-RR (RECQL4 antibody) at dilution of 1:5000 incubated at room temperature for 1.5 hours.



Immunofluorescent analysis of (4% PFA) fixed A431 cells using RECQL4 antibody (86529-2-RR, Clone: 251312D3) at dilution of 1:200 and CoraLite® 488-Conjugated Goat Anti-Rabbit IgG(H+L) (SA00013-2), CL594-Phalloidin (red).



Biolayer interferometry (BLI) kinetic assays of 86529-2-RR against Human RECQL4 were performed. The affinity constant is below 1 pM.