

For Research Use Only

Rat B7-1 / CD80 Recombinant antibody, PBS Only (Detector)

Catalog Number:86532-2-PBS



Basic Information

Catalog Number: 86532-2-PBS	GenBank Accession Number: GeneID (NCBI): 25408	Purification Method: Protein A purification
Size: 100ug , Concentration: 1 mg/ml by Nanodrop;	UNIPROT ID: Q62680	CloneNo.: 250725F5
Source: Rabbit	Full Name: Cd80 molecule	
Isotype: IgG	Calculated MW: 33 kDa	
Immunogen Catalog Number: EG3841		

Applications

Tested Applications:
Cytometric bead array, Indirect ELISA, Sample test

Species Specificity:
rat

Product Information

86532-2-PBS targets B7-1 / CD80 as part of a matched antibody pair:

MP02497-1: 86532-3-PBS capture and 86532-2-PBS detection (validated in Cytometric bead array)

Unconjugated rabbit recombinant monoclonal antibody in PBS only (BSA and azide free) storage buffer at a concentration of 1 mg/mL, ready for conjugation. Created using Proteintech's proprietary in-house recombinant technology. Recombinant production enables unrivalled batch-to-batch consistency, easy scale-up, and future security of supply.

This conjugation ready format makes antibodies ideal for use in many applications including: ELISAs, multiplex assays requiring matched pairs, mass cytometry, and multiplex imaging applications. Antibody use should be optimized by the end user for each application and assay.

Storage

Storage:
Store at -80°C.
Storage Buffer:
PBS only, pH7.3

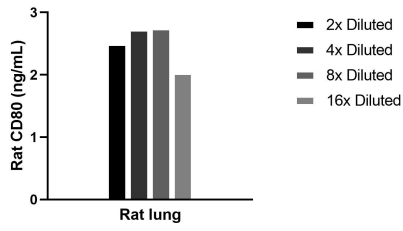
For technical support and original validation data for this product please contact:

T: 1 (888) 4PTGLAB (1-888-478-4522) (toll free
in USA), or 1(312) 455-8498 (outside USA)

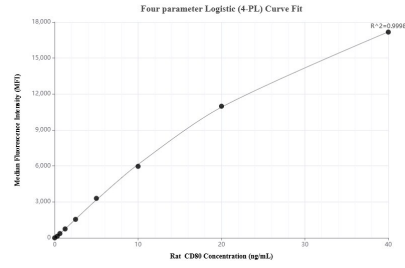
E: proteintech@ptglab.com
W: ptglab.com

This product is exclusively available under Proteintech Group brand and is not available to purchase from any other manufacturer.

Selected Validation Data



The mean CD80 concentration was determined to be 2.5 ng/mL in Rat lung tissue extract based on a 5.2 mg/mL extract load.



Cytometric bead array standard curve of MP02497-1, RAT CD80 Recombinant Matched Antibody Pair, PBS Only. Capture antibody: 86532-3-PBS. Detection antibody: 86532-2-PBS. Standard: Eg3841. Range: 0.312-40 ng/mL.