

For Research Use Only

LOXL1 Recombinant monoclonal antibody, PBS Only (Capture)

Catalog Number: 86534-1-PBS



Basic Information

| | | |
|---|--|---|
| Catalog Number: 86534-1-PBS | GenBank Accession Number: BC015090 | Purification Method: Protein A purification |
| Size: 100ug , Concentration: 1 mg/ml by Nanodrop; | GeneID (NCBI): 4016 | CloneNo.: 251345F4 |
| Source: Rabbit | UNIPROT ID: Q08397 | |
| Isotype: IgG | Full Name: lysyl oxidase-like 1 | |
| Immunogen Catalog Number: AG24293 | Calculated MW: 63 kDa | |
| | Observed MW: 60-63 kDa | |

Applications

Tested Applications:
WB, Sandwich ELISA, Indirect ELISA

Species Specificity:
human

Product Information

86534-1-PBS targets LOXL1 as part of a matched antibody pair:

MP02828-1: 86534-1-PBS capture and 86534-3-PBS detection (validated in Sandwich ELISA)

Unconjugated rabbit recombinant monoclonal antibody in PBS only (BSA and azide free) storage buffer at a concentration of 1 mg/mL, ready for conjugation. Created using Proteintech's proprietary in-house recombinant technology. Recombinant production enables unrivalled batch-to-batch consistency, easy scale-up, and future security of supply.

This conjugation ready format makes antibodies ideal for use in many applications including: ELISAs, multiplex assays requiring matched pairs, mass cytometry, and multiplex imaging applications. Antibody use should be optimized by the end user for each application and assay.

Background Information

Three LOXL1 variants are seen: a band of 64 kDa matching the predicted full-length form lacking the secretory signal peptide, a band of 67 kDa presumed to be the full-length form with the signal peptide, and a band of 36 kDa matching the cleavage product.

Storage

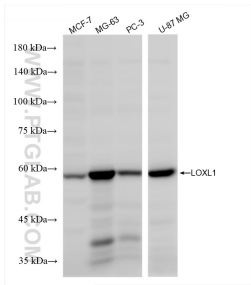
Storage:
Store at -80°C.

Storage Buffer:
PBS only, pH7.3

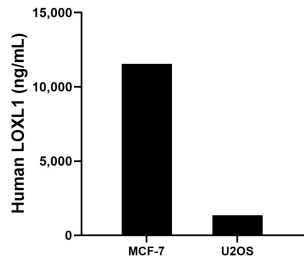
For technical support and original validation data for this product please contact:
T: 1 (888) 4PTGLAB (1-888-478-4522) (toll free in USA), or 1(312) 455-8498 (outside USA)
E: proteintech@ptglab.com
W: ptglab.com

This product is exclusively available under Proteintech Group brand and is not available to purchase from any other manufacturer.

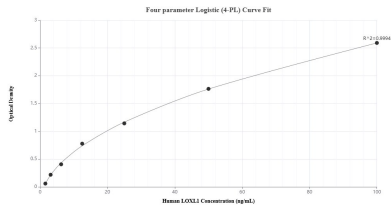
Selected Validation Data



Various lysates were subjected to SDS PAGE followed by western blot with 86534-1-RR (LOXL1 antibody) at dilution of 1:1000 incubated at room temperature for 1.5 hours. This data was developed using the same antibody clone with 86534-1-PBS in a different storage buffer formulation.



The mean LOXL1 concentration was determined to be 11,541.0 ng/mL in MCF-7 cell extract based on a 1.2 mg/mL extract load and 1,341.0 ng/mL in U2OS cell extract based on a 1.2 mg/mL extract load.



Sandwich ELISA standard curve of MP02828-1, Human LOXL1 Recombinant Matched Antibody Pair - PBS only. 86534-1-PBS was coated to a plate as the capture antibody and incubated with serial dilutions of standard Ag24293. 86534-3-PBS was HRP conjugated as the detection antibody. Range: 1.56-100 ng/mL