

For Research Use Only

LOXL1 Recombinant monoclonal antibody, PBS Only

Catalog Number: 86534-2-PBS



Basic Information

Catalog Number:

86534-2-PBS

Size:

100ug, Concentration: 1 mg/ml by Nanodrop;

Source:

Rabbit

Isotype:

IgG

Immunogen Catalog Number:

AG24293

GenBank Accession Number:

BC015090

GeneID (NCBI):

4016

UNIPROT ID:

Q08397

Full Name:

lysyl oxidase-like 1

Calculated MW:

63 kDa

Observed MW:

60-63 kDa

Purification Method:

Protein A purification

CloneNo.:

251345E7

Applications

Tested Applications:

WB, IF/ICC, Indirect ELISA

Species Specificity:

human

Background Information

Three LOXL1 variants are seen: a band of 64 kDa matching the predicted full-length form lacking the secretory signal peptide, a band of 67 kDa presumed to be the full-length form with the signal peptide, and a band of 36 kDa matching the cleavage product.

Storage

Storage:

Store at -80°C.

Storage Buffer:

PBS only, pH7.3

For technical support and original validation data for this product please contact:

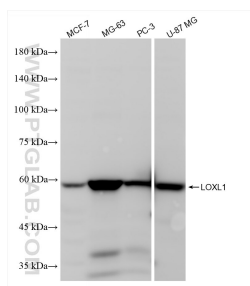
T: 1 (888) 4PTGLAB (1-888-478-4522) (toll free in USA), or 1(312) 455-8498 (outside USA)

E: proteintech@ptglab.com

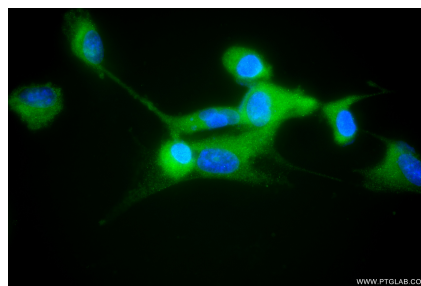
W: ptglab.com

This product is exclusively available under Proteintech Group brand and is not available to purchase from any other manufacturer.

Selected Validation Data



Various lysates were subjected to SDS PAGE followed by western blot with 86534-2-RR (LOXL1 antibody) at dilution of 1:10000 incubated at room temperature for 1.5 hours. This data was developed using the same antibody clone with 86534-2-PBS in a different storage buffer formulation.



Immunofluorescent analysis of (-20°C Ethanol) fixed U-87 MG cells using LOXL1 antibody (86534-2-RR, Clone: 251345E7) at dilution of 1:400 and CoraLite® 488-Conjugated Goat Anti-Rabbit IgG(H+L) (SA00013-2). This data was developed using the same antibody clone with 86534-2-PBS in a different storage buffer formulation.