

SKIV2L2 Recombinant monoclonal antibody, PBS Only (Detector)

Catalog Number: 86536-1-PBS

Basic Information

Catalog Number: 86536-1-PBS	GenBank Accession Number: BC028604	Purification Method: Protein A purification
Size: 100ug , Concentration: 1 mg/ml by Nanodrop;	GeneID (NCBI): 23517	CloneNo.: 251430D11
Source: Rabbit	UNIPROT ID: P42285	
Isotype: IgG	Full Name: superkiller viralicidic activity 2-like 2 (S. cerevisiae)	
Immunogen Catalog Number: AG3414	Calculated MW: 1042 aa, 118 kDa	
	Observed MW: 118 kDa	

Applications

Tested Applications:
WB, IF/ICC, Cytometric bead array, Indirect ELISA

Species Specificity:
human, mouse

Product Information

86536-1-PBS targets SKIV2L2 as part of a matched antibody pair:

MP02496-1: 86536-2-PBS capture and 86536-1-PBS detection (validated in Cytometric bead array)

Unconjugated rabbit recombinant monoclonal antibody in PBS only (BSA and azide free) storage buffer at a concentration of 1 mg/mL, ready for conjugation. Created using Proteintech's proprietary in-house recombinant technology. Recombinant production enables unrivalled batch-to-batch consistency, easy scale-up, and future security of supply.

This conjugation ready format makes antibodies ideal for use in many applications including: ELISAs, multiplex assays requiring matched pairs, mass cytometry, and multiplex imaging applications. Antibody use should be optimized by the end user for each application and assay.

Background Information

SKIV2L2 (Ski2-like RNA helicase 2, also called Mtr4) is an evolutionarily conserved 3'→5' RNA helicase belonging to the Ski2-like subfamily of DExH-box helicases. SKIV2L2 is an essential component of the nuclear exosome targeting (NEXT) complex, where it acts as the major ATP-dependent motor that threads RNA substrates into the catalytic core of the RNA exosome for processing and degradation. Through this activity, SKIV2L2 regulates the turnover of aberrant pre-mRNAs, non-coding RNAs, and promoter-associated RNAs, thereby influencing gene expression, ribosomal RNA biogenesis, and maintenance of nuclear RNA homeostasis. It plays a role in cell differentiation and spermatogenesis. Clinically, germline mutations in SKIV2L2 have been associated with tricho-hepato-enteric syndrome, highlighting its importance in intestinal and hepatic development. (PMID: 39863862)

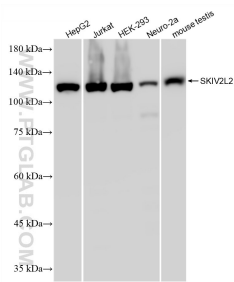
Storage

Storage:
Store at -80°C.
Storage Buffer:
PBS only, pH7.3

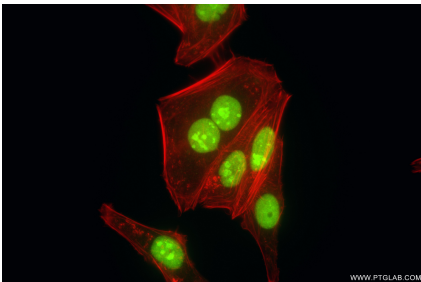
For technical support and original validation data for this product please contact:
T: 1 (888) 4PTGLAB (1-888-478-4522) (toll free in USA), or 1(312) 455-8498 (outside USA)
E: proteintech@ptglab.com
W: ptglab.com

This product is exclusively available under Proteintech Group brand and is not available to purchase from any other manufacturer.

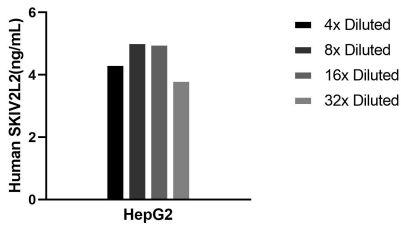
Selected Validation Data



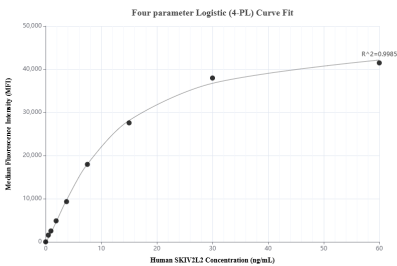
Various lysates were subjected to SDS PAGE followed by western blot with 86536-1-RR (SKIV2L2 antibody) at dilution of 1:10000 incubated at room temperature for 1.5 hours. This data was developed using the same antibody clone with 86536-1-PBS in a different storage buffer formulation.



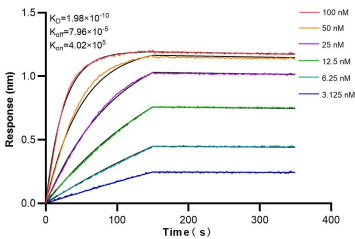
Immunofluorescent analysis of (4% PFA) fixed HepG2 cells using SKIV2L2 antibody (86536-1-RR, Clone: 251430D11) at dilution of 1:800 and CoraLite® 488-Conjugated Goat Anti-Rabbit IgG(H+L) (SA00013-2), CL594-Phalloidin (red). This data was developed using the same antibody clone with 86536-1-PBS in a different storage buffer formulation.



The mean SKIV2L2 concentration was determined to be 4.6 ng/mL in HepG2 cell extract based on a 1.1 mg/mL extract load.



Cytometric bead array standard curve of MP02496-1, SKIV2L2 Recombinant Matched Antibody Pair, PBS Only. Capture antibody: 86536-2-PBS. Detection antibody: 86536-1-PBS. Standard: Ag3414. Range: 0.469-60 ng/mL



Biolayer interferometry (BLI) kinetic assays of 86536-1-RR against Human SKIV2L2 were performed. The affinity constant is 0.198 nM.