

# SKIV2L2 Recombinant monoclonal antibody

Catalog Number: 86536-1-RR

## Basic Information

<b>Catalog Number:</b> 86536-1-RR	<b>GenBank Accession Number:</b> BC028604	<b>Purification Method:</b> Protein A purification
<b>Size:</b> 100ul , Concentration: 1000 µg/ml by Nanodrop;	<b>GeneID (NCBI):</b> 23517	<b>CloneNo.:</b> 251430D11
<b>Source:</b> Rabbit	<b>UNIPROT ID:</b> P42285	<b>Recommended Dilutions:</b> WB: 1:5000-1:50000 IF/ICC: 1:400-1:1600
<b>Isotype:</b> IgG	<b>Full Name:</b> superkiller viralicidic activity 2-like 2 (S. cerevisiae)	
<b>Immunogen Catalog Number:</b> AG3414	<b>Calculated MW:</b> 1042 aa, 118 kDa <b>Observed MW:</b> 118 kDa	

## Applications

<b>Tested Applications:</b> WB, IF/ICC, ELISA	<b>Positive Controls:</b>
<b>Species Specificity:</b> human, mouse	<b>WB :</b> HepG2 cells, IMR-32 cells, Jurkat cells, HEK-293 cells, Neuro-2a cells, mouse testis tissue <b>IF/ICC :</b> HepG2 cells,

## Background Information

SKIV2L2 (Ski2-like RNA helicase 2, also called Mtr4) is an evolutionarily conserved 3'→5' RNA helicase belonging to the Ski2-like subfamily of DExH-box helicases. SKIV2L2 is an essential component of the nuclear exosome targeting (NEXT) complex, where it acts as the major ATP-dependent motor that threads RNA substrates into the catalytic core of the RNA exosome for processing and degradation. Through this activity, SKIV2L2 regulates the turnover of aberrant pre-mRNAs, non-coding RNAs, and promoter-associated RNAs, thereby influencing gene expression, ribosomal RNA biogenesis, and maintenance of nuclear RNA homeostasis. It plays a role in cell differentiation and spermatogenesis. Clinically, germline mutations in SKIV2L2 have been associated with tricho-hepato-enteric syndrome, highlighting its importance in intestinal and hepatic development. (PMID: 39863862)

## Storage

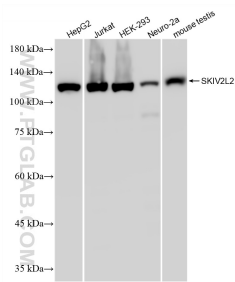
**Storage:**  
Store at -20°C. Stable for one year after shipment.  
**Storage Buffer:**  
PBS with 0.02% sodium azide and 50% glycerol, pH7.3  
**Aliquoting is unnecessary for -20°C storage**

\*\*\* 20ul sizes contain 0.1% BSA

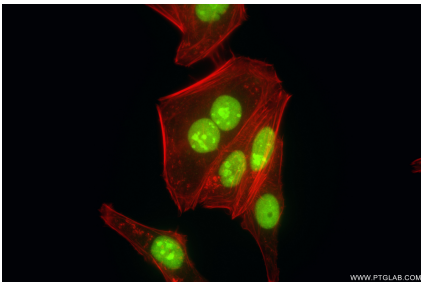
For technical support and original validation data for this product please contact:  
T: 1 (888) 4PTGLAB (1-888-478-4522) (toll free in USA), or 1(312) 455-8498 (outside USA)  
E: [proteintech@ptglab.com](mailto:proteintech@ptglab.com)  
W: [ptglab.com](http://ptglab.com)

This product is exclusively available under Proteintech Group brand and is not available to purchase from any other manufacturer.

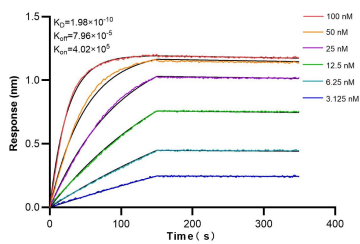
Selected Validation Data



Various lysates were subjected to SDS PAGE followed by western blot with 86536-1-RR (SKIV2L2 antibody) at dilution of 1:10000 incubated at room temperature for 1.5 hours.



Immunofluorescent analysis of (4% PFA) fixed HepG2 cells using SKIV2L2 antibody (86536-1-RR, Clone: 251430D11) at dilution of 1:800 and CoraLite® 488-Conjugated Goat Anti-Rabbit IgG(H+L) (SA00013-2), CL594-Phalloidin (red).



Biolayer interferometry (BLI) kinetic assays of 86536-1-RR against Human SKIV2L2 were performed. The affinity constant is 0.198 nM.