

For Research Use Only

MSPR/Ron/CD136 Recombinant monoclonal antibody, PBS Only (Capture)

Catalog Number: 86539-2-PBS



Basic Information

Catalog Number: 86539-2-PBS	GenBank Accession Number: NM_002447.4	Purification Method: Protein A purification
Size: 100ug , Concentration: 1 mg/ml by Nanodrop;	GeneID (NCBI): 4486	CloneNo.: 251102G6
Source: Rabbit	UNIPROT ID: Q04912-1	
Isotype: IgG	Full Name: macrophage stimulating 1 receptor (c-met-related tyrosine kinase)	
Immunogen Catalog Number: EG3493	Calculated MW: 152 kDa	

Applications

Tested Applications:
Cytometric bead array, Sandwich ELISA, Indirect ELISA

Species Specificity:
human

Product Information

86539-2-PBS targets MSPR/Ron/CD136 as part of a matched antibody pair:

MP02494-1: 86539-2-PBS capture and 86539-1-PBS detection (validated in Cytometric bead array, Sandwich ELISA)

Unconjugated rabbit recombinant monoclonal antibody in PBS only (BSA and azide free) storage buffer at a concentration of 1 mg/mL, ready for conjugation. Created using Proteintech's proprietary in-house recombinant technology. Recombinant production enables unrivalled batch-to-batch consistency, easy scale-up, and future security of supply.

This conjugation ready format makes antibodies ideal for use in many applications including: ELISAs, multiplex assays requiring matched pairs, mass cytometry, and multiplex imaging applications. Antibody use should be optimized by the end user for each application and assay.

Storage

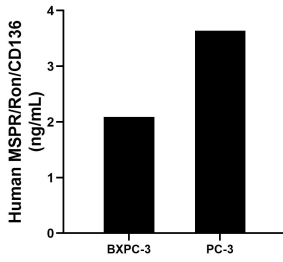
Storage:
Store at -80°C.

Storage Buffer:
PBS only, pH7.3

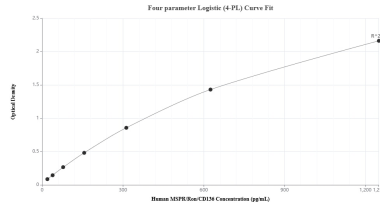
For technical support and original validation data for this product please contact:
T: 1 (888) 4PTGLAB (1-888-478-4522) (toll free in USA), or 1(312) 455-8498 (outside USA) E: proteintech@ptglab.com
W: ptglab.com

This product is exclusively available under Proteintech Group brand and is not available to purchase from any other manufacturer.

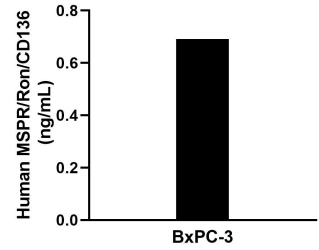
Selected Validation Data



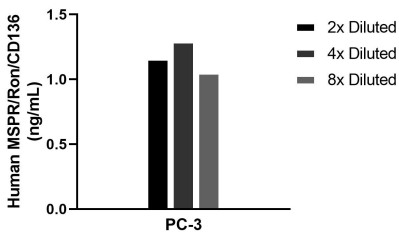
The mean MSPR/Ron/CD136 concentration was determined to be 2.09 ng/mL in BxPC-3 cell extract based on a 1.2 mg/mL extract load and 3.64 ng/mL in PC-3 cell extract based on a 1.3 mg/mL extract load.



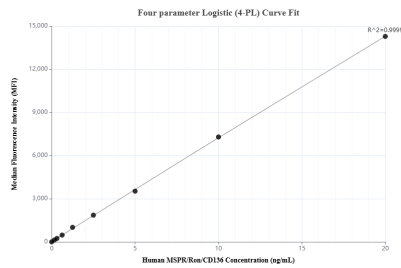
Sandwich ELISA standard curve of MP02494-1, Human MSPR/Ron/CD136 Recombinant Matched Antibody Pair - PBS only. 86539-2-PBS was coated to a plate as the capture antibody and incubated with serial dilutions of standard Eg3493. 86539-1-PBS was HRP conjugated as the detection antibody. Range: 19.5-1250 pg/mL



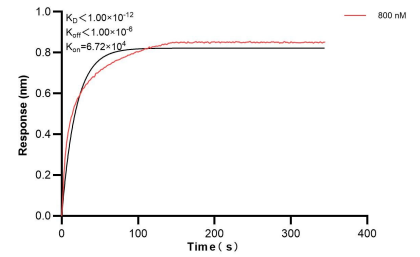
The mean MSPR/Ron/CD136 concentration was determined to be 0.7 ng/mL in BxPC-3 cell extract based on a 5.4 mg/mL extract load.



The mean MSPR/Ron/CD136 concentration was determined to be 1.2 ng/mL in PC-3 cell extract based on a 1.1 mg/mL extract load.



Cytometric bead array standard curve of MP02494-1, MSPR/Ron/CD136 Recombinant Matched Antibody Pair, PBS Only. Capture antibody: 86539-2-PBS. Detection antibody: 86539-1-PBS. Standard: Eg3493. Range: 0.156-20 ng/mL



Bi-layer interferometry (BLI) kinetic assay of 86539-2-PBS against Human MSPR/Ron/CD136 was performed. The affinity constant is below 1 pM.