

For Research Use Only

Siglec-5/CD170 Recombinant antibody, PBS Only (Capture)

Catalog Number:86546-2-PBS



Basic Information

Catalog Number: 86546-2-PBS	GenBank Accession Number: NM_003830.4	Purification Method: Protein A purification
Size: 100ug , Concentration: 1 mg/ml by Nanodrop;	GeneID (NCBI): 8778	CloneNo.: 250743B1
Source: Rabbit	UNIPROT ID: O15389	
Isotype: IgG	Full Name: sialic acid binding Ig-like lectin 5	
Immunogen Catalog Number: EG1673	Calculated MW: 61kDa	

Applications

Tested Applications:
Sandwich ELISA, Indirect ELISA, Sample test

Species Specificity:
human

Product Information

86546-2-PBS targets Siglec-5/CD170 as part of a matched antibody pair:

MP02480-1: 86546-2-PBS capture and 86546-1-PBS detection (validated in Sandwich ELISA)

Unconjugated rabbit recombinant monoclonal antibody in PBS only (BSA and azide free) storage buffer at a concentration of 1 mg/mL, ready for conjugation. Created using Proteintech's proprietary in-house recombinant technology. Recombinant production enables unrivalled batch-to-batch consistency, easy scale-up, and future security of supply.

This conjugation ready format makes antibodies ideal for use in many applications including: ELISAs, multiplex assays requiring matched pairs, mass cytometry, and multiplex imaging applications. Antibody use should be optimized by the end user for each application and assay.

Storage

Storage:
Store at -80°C.

Storage Buffer:
PBS only, pH7.3

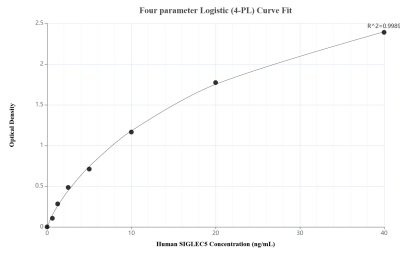
For technical support and original validation data for this product please contact:

T: 1 (888) 4PTGLAB (1-888-478-4522) (toll free
in USA), or 1(312) 455-8498 (outside USA)

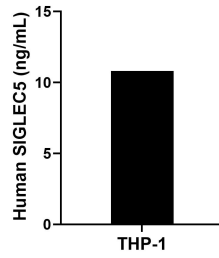
E: proteintech@ptglab.com
W: ptglab.com

This product is exclusively available under Proteintech Group brand and is not available to purchase from any other manufacturer.

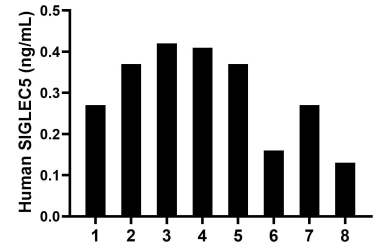
Selected Validation Data



Sandwich ELISA standard curve of MPO2480-1, Human SIGLEC5 Recombinant Matched Antibody Pair - PBS only. 86546-2-PBS was coated to a plate as the capture antibody and incubated with serial dilutions of standard Eg1673. 86546-1-PBS was HRP conjugated as the detection antibody. Range: 0.625-40 ng/mL.



The mean SIGLEC5 concentration was determined to be 10.81 ng/mL in THP-1 cell extract based on a 1.20 mg/mL extract load.



Plasma of eight individual healthy human donors was measured. The SIGLEC5 concentration of detected samples was determined to be 0.30 ng/mL with a range of 0.13-0.42 ng/mL.