

For Research Use Only

CNN3 Recombinant monoclonal antibody, PBS Only (Detector)

Catalog Number: 86550-1-PBS



Basic Information

Catalog Number: 86550-1-PBS	GenBank Accession Number: BC025372	Purification Method: Protein A purification
Size: 100ug , Concentration: 1 mg/ml by Nanodrop;	GeneID (NCBI): 1266	CloneNo.: 251475H4
Source: Rabbit	UNIPROT ID: Q15417	
Isotype: IgG	Full Name: calponin 3, acidic	
Immunogen Catalog Number: AG2068	Calculated MW: 329 aa, 36 kDa	

Applications

Tested Applications:
Cytometric bead array, Sandwich ELISA, Indirect ELISA

Species Specificity:
human

Product Information

86550-1-PBS targets CNN3 as part of a matched antibody pair:

MP02515-1: 86550-2-PBS capture and 86550-1-PBS detection (validated in Cytometric bead array, Sandwich ELISA)

Unconjugated rabbit recombinant monoclonal antibody in PBS only (BSA and azide free) storage buffer at a concentration of 1 mg/mL, ready for conjugation. Created using Proteintech's proprietary in-house recombinant technology. Recombinant production enables unrivalled batch-to-batch consistency, easy scale-up, and future security of supply.

This conjugation ready format makes antibodies ideal for use in many applications including: ELISAs, multiplex assays requiring matched pairs, mass cytometry, and multiplex imaging applications. Antibody use should be optimized by the end user for each application and assay.

Storage

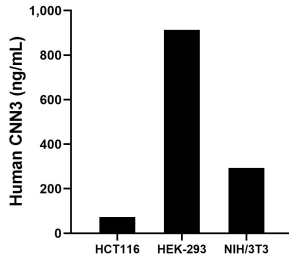
Storage:
Store at -80°C.

Storage Buffer:
PBS only, pH7.3

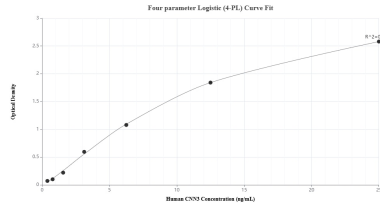
For technical support and original validation data for this product please contact:
T: 1 (888) 4PTGLAB (1-888-478-4522) (toll free in USA), or 1(312) 455-8498 (outside USA) E: proteintech@ptglab.com
W: ptglab.com

This product is exclusively available under Proteintech Group brand and is not available to purchase from any other manufacturer.

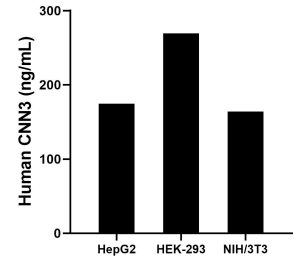
Selected Validation Data



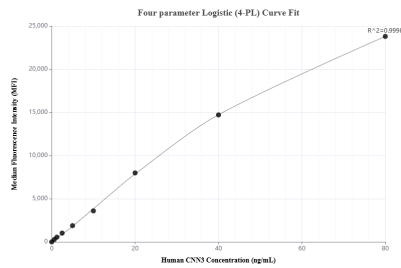
The mean CNN3 concentration was determined to be 73.47 ng/mL in HCT116 cell extract based on a 1.3 mg/mL extract load, 913.07 ng/mL in HEK-293 cell extract based on a 1.2 mg/mL extract load and 292.95 ng/mL in NIH/3T3 cell extract based on a 1.2 mg/mL extract load.



Sandwich ELISA standard curve of MP02515-1, Human CNN3 Recombinant Matched Antibody Pair - PBS only. 86550-2-PBS was coated to a plate as the capture antibody and incubated with serial dilutions of standard Ag2068. 86550-1-PBS was HRP conjugated as the detection antibody. Range: 0.391-25 ng/mL



The mean CNN3 concentration was determined to be 176.6 ng/mL in HepG2 cell extract based on a 1.5 mg/mL extract load, 269.5 ng/mL in HEK-293 cell extract based on a 1.1 mg/mL extract load, 164.0 ng/mL in NIH/3T3 cell extract based on a 1.4 mg/mL extract load.



Cytometric bead array standard curve of MP02515-1, CNN3 Recombinant Matched Antibody Pair, PBS Only. Capture antibody: 86550-2-PBS. Detection antibody: 86550-1-PBS. Standard: Ag2068. Range: 0.625-80 ng/mL