

For Research Use Only

UBE2V2 Recombinant monoclonal antibody, PBS Only (Detector)

Catalog Number: 86551-1-PBS



Basic Information

Catalog Number: 86551-1-PBS	GenBank Accession Number: BC007051	Purification Method: Protein A purification
Size: 100ug , Concentration: 1 mg/ml by Nanodrop;	GeneID (NCBI): 7336	CloneNo.: 251485F1
Source: Rabbit	UNIPROT ID: Q15819	
Isotype: IgG	Full Name: ubiquitin-conjugating enzyme E2 variant 2	
Immunogen Catalog Number: AG1111	Calculated MW: 16 kDa	

Applications

Tested Applications:
Cytometric bead array, Sandwich ELISA, Indirect ELISA

Species Specificity:
human

Product Information

86551-1-PBS targets UBE2V2 as part of a matched antibody pair:

MP02524-1: 86551-2-PBS capture and 86551-1-PBS detection (validated in Cytometric bead array, Sandwich ELISA)

Unconjugated rabbit recombinant monoclonal antibody in PBS only (BSA and azide free) storage buffer at a concentration of 1 mg/mL, ready for conjugation. Created using Proteintech's proprietary in-house recombinant technology. Recombinant production enables unrivalled batch-to-batch consistency, easy scale-up, and future security of supply.

This conjugation ready format makes antibodies ideal for use in many applications including: ELISAs, multiplex assays requiring matched pairs, mass cytometry, and multiplex imaging applications. Antibody use should be optimized by the end user for each application and assay.

Storage

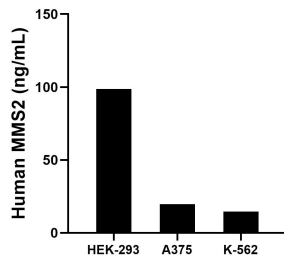
Storage:
Store at -80°C.

Storage Buffer:
PBS only, pH7.3

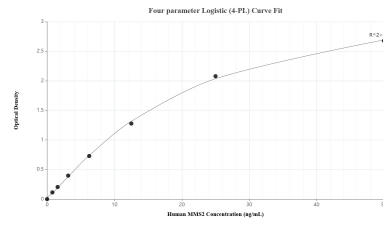
For technical support and original validation data for this product please contact:
T: 1 (888) 4PTGLAB (1-888-478-4522) (toll free in USA), or 1(312) 455-8498 (outside USA) E: proteintech@ptglab.com
W: ptglab.com

This product is exclusively available under Proteintech Group brand and is not available to purchase from any other manufacturer.

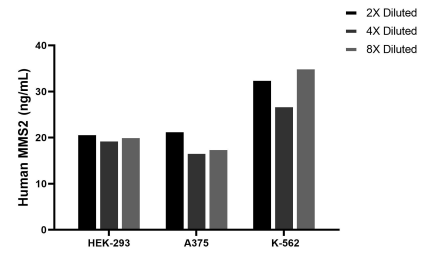
Selected Validation Data



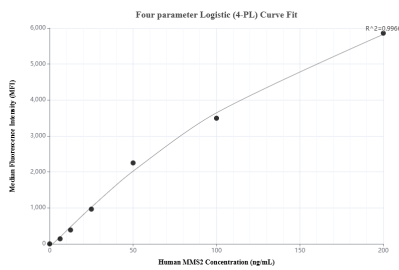
The mean MMS2 concentration was determined to be 98.67 ng/mL in HEK-293 cell extract based on a 1.20 mg/mL extract load, 19.79 ng/mL in A375 cell extract based on a 1.60 mg/mL extract load and 14.71 ng/mL in K-562 cell extract based on a 1.20 mg/mL extract load.



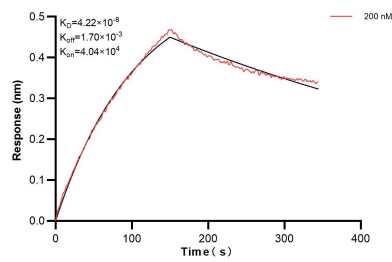
Sandwich ELISA standard curve of MP02524-1, Human MMS2 Recombinant Matched Antibody Pair - PBS only. 86551-2-PBS was coated to a plate as the capture antibody and incubated with serial dilutions of standard Ag1111. 86551-1-PBS was HRP conjugated as the detection antibody. Range: 0.781-50 ng/mL.



The mean MMS2 concentration was determined to be 20.3 ng/mL in HEK-293 cell extract based on a 1.1 mg/mL extract load, 18.8 ng/mL in A375 cell extract based on a 1.6 mg/mL extract load, 31.7 ng/mL in K-562 cell extract based on a 1.2 mg/mL extract load.



Cytometric bead array standard curve of MP02524-1, MMS2 Recombinant Matched Antibody Pair, PBS Only. Capture antibody: 86551-2-PBS. Detection antibody: 86551-1-PBS. Standard: Ag1111. Range: 6.25-200 ng/mL.



Biolayer interferometry (BLI) kinetic assay of 86551-1-PBS against Human UBE2V2 was performed. The affinity constant is 42.2 nM.