

For Research Use Only

# UBE2V2 Recombinant monoclonal antibody, PBS Only (Capture)

Catalog Number: 86551-2-PBS



## Basic Information

|   |  |   |
|---|--|---|
| <b>Catalog Number:</b><br>86551-2-PBS                       | <b>GenBank Accession Number:</b><br>BC007051                   | <b>Purification Method:</b><br>Protein A purification |
| <b>Size:</b><br>100ug , Concentration: 1 mg/ml by Nanodrop; | <b>GeneID (NCBI):</b><br>7336                                  | <b>CloneNo.:</b><br>251485H1                          |
| <b>Source:</b><br>Rabbit                                    | <b>UNIPROT ID:</b><br>Q15819                                   |   |
| <b>Isotype:</b><br>IgG                                      | <b>Full Name:</b><br>ubiquitin-conjugating enzyme E2 variant 2 |   |
| <b>Immunogen Catalog Number:</b><br>AG1111                  | <b>Calculated MW:</b><br>16 kDa                                |   |

## Applications

**Tested Applications:**  
Cytometric bead array, Sandwich ELISA, Indirect ELISA

**Species Specificity:**  
human

## Product Information

86551-2-PBS targets UBE2V2 as part of a matched antibody pair:

MP02524-1: 86551-2-PBS capture and 86551-1-PBS detection (validated in Cytometric bead array, Sandwich ELISA)

Unconjugated rabbit recombinant monoclonal antibody in PBS only (BSA and azide free) storage buffer at a concentration of 1 mg/mL, ready for conjugation. Created using Proteintech's proprietary in-house recombinant technology. Recombinant production enables unrivalled batch-to-batch consistency, easy scale-up, and future security of supply.

This conjugation ready format makes antibodies ideal for use in many applications including: ELISAs, multiplex assays requiring matched pairs, mass cytometry, and multiplex imaging applications. Antibody use should be optimized by the end user for each application and assay.

## Storage

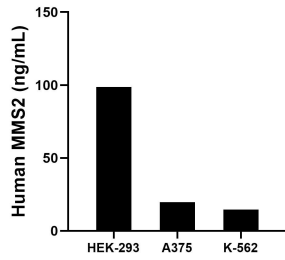
**Storage:**  
Store at -80°C.

**Storage Buffer:**  
PBS only, pH7.3

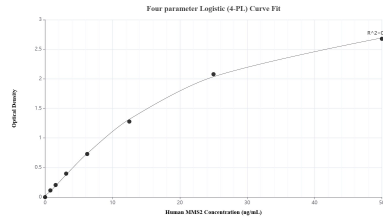
For technical support and original validation data for this product please contact:  
T: 1 (888) 4PTGLAB (1-888-478-4522) (toll free in USA), or 1(312) 455-8498 (outside USA)      E: proteintech@ptglab.com  
W: ptglab.com

**This product is exclusively available under Proteintech Group brand and is not available to purchase from any other manufacturer.**

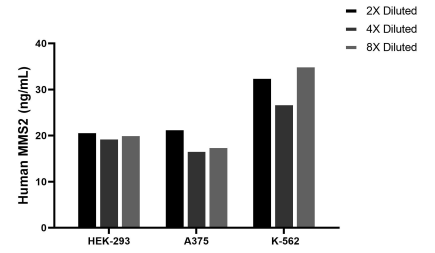
## Selected Validation Data



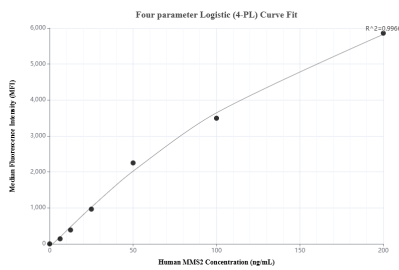
The mean MMS2 concentration was determined to be 98.67 ng/mL in HEK-293 cell extract based on a 1.20 mg/mL extract load, 19.79 ng/mL in A375 cell extract based on a 1.60 mg/mL extract load and 14.71 ng/mL in K-562 cell extract based on a 1.20 mg/mL extract load.



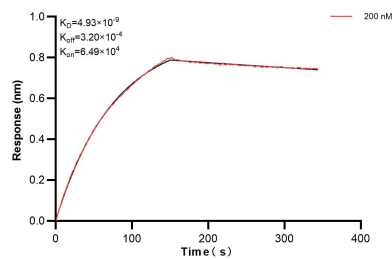
Sandwich ELISA standard curve of MP02524-1, Human MMS2 Recombinant Matched Antibody Pair - PBS only. 86551-2-PBS was coated to a plate as the capture antibody and incubated with serial dilutions of standard Ag1111. 86551-1-PBS was HRP conjugated as the detection antibody. Range: 0.781-50 ng/mL.



The mean MMS2 concentration was determined to be 20.3 ng/mL in HEK-293 cell extract based on a 1.1 mg/mL extract load, 18.8 ng/mL in A375 cell extract based on a 1.6 mg/mL extract load, 31.7 ng/mL in K-562 cell extract based on a 1.2 mg/mL extract load.



Cytometric bead array standard curve of MP02524-1, MMS2 Recombinant Matched Antibody Pair, PBS Only. Capture antibody: 86551-2-PBS. Detection antibody: 86551-1-PBS. Standard: Ag1111. Range: 6.25-200 ng/mL.



Biolayer interferometry (BLI) kinetic assay of 86551-2-PBS against Human UBE2V2 was performed. The affinity constant is 4.93 nM.