

For Research Use Only

KYNU Recombinant monoclonal antibody, PBS Only (Capture)

Catalog Number: 86555-2-PBS



Basic Information

Catalog Number: 86555-2-PBS	GenBank Accession Number: BC000879	Purification Method: Protein A purification
Size: 100ug , Concentration: 1 mg/ml by Nanodrop;	GeneID (NCBI): 8942	CloneNo.: 251437B3
Source: Rabbit	UNIPROT ID: Q16719	
Isotype: IgG	Full Name: kynureninase (L-kynurenine hydrolase)	
Immunogen Catalog Number: AG2365	Calculated MW: 465aa,52 kDa; 307aa,35 kDa	

Applications

Tested Applications:
Cytometric bead array, Sandwich ELISA, Indirect ELISA

Species Specificity:
human

Product Information

86555-2-PBS targets KYNU as part of a matched antibody pair:

MP02527-1: 86555-2-PBS capture and 86555-1-PBS detection (validated in Cytometric bead array)

MP02527-2: 86555-2-PBS capture and 86555-5-PBS detection (validated in Sandwich ELISA)

Unconjugated rabbit recombinant monoclonal antibody in PBS only (BSA and azide free) storage buffer at a concentration of 1 mg/mL, ready for conjugation. Created using Proteintech's proprietary in-house recombinant technology. Recombinant production enables unrivalled batch-to-batch consistency, easy scale-up, and future security of supply.

This conjugation ready format makes antibodies ideal for use in many applications including: ELISAs, multiplex assays requiring matched pairs, mass cytometry, and multiplex imaging applications. Antibody use should be optimized by the end user for each application and assay.

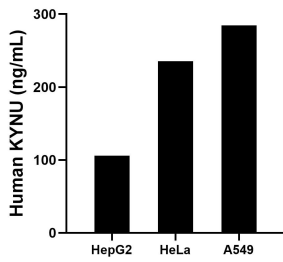
Storage

Storage:
Store at -80°C.
Storage Buffer:
PBS only, pH7.3

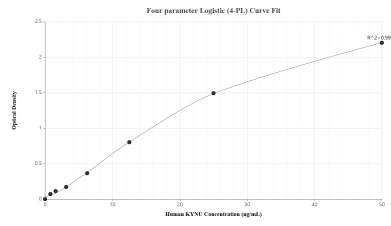
For technical support and original validation data for this product please contact:
T: 1 (888) 4PTGLAB (1-888-478-4522) (toll free in USA), or 1(312) 455-8498 (outside USA) E: proteintech@ptglab.com
W: ptglab.com

This product is exclusively available under Proteintech Group brand and is not available to purchase from any other manufacturer.

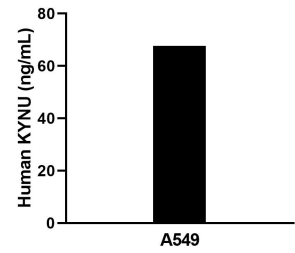
Selected Validation Data



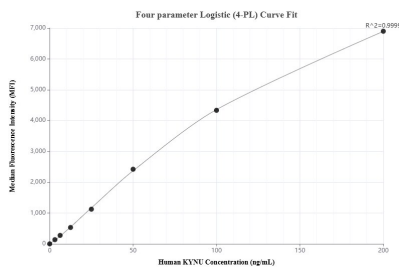
The mean KYNU concentration was determined to be 105.94 ng/mL in HepG2 cell extract based on a 1.20 mg/mL extract load, 235.47 ng/mL in HeLa cell extract based on a 1.20 mg/mL extract load and 284.39 ng/mL in A549 cell extract based on a 1.20 mg/mL extract load.



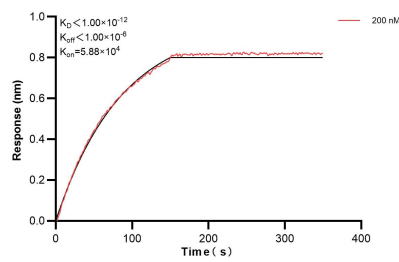
Sandwich ELISA standard curve of MP02527-2, Human KYNU Recombinant Matched Antibody Pair - PBS only. 86555-2-PBS was coated to a plate as the capture antibody and incubated with serial dilutions of standard Ag2365. 86555-5-PBS was HRP conjugated as the detection antibody. Range: 0.781-50 ng/mL.



The mean KYNU concentration was determined to be 68.5 ng/mL in A549 cell extract based on a 1.2 mg/mL extract load.



Cytometric bead array standard curve of MP02527-1, KYNU Recombinant Matched Antibody Pair, PBS Only. Capture antibody: 86555-2-PBS. Detection antibody: 86555-1-PBS. Standard: Ag2365. Range: 3.125-200 ng/mL.



Biolayer interferometry (BLI) kinetic assays of 86555-2-PBS against Human KYNU were performed. The affinity constant is below 1 pM.