

For Research Use Only

# KYNU Recombinant antibody

Catalog Number: 86555-4-RR



## Basic Information

<b>Catalog Number:</b> 86555-4-RR	<b>GenBank Accession Number:</b> BC000879	<b>Purification Method:</b> Protein A purification
<b>Size:</b> 100ul , Concentration: 1000 µg/ml by Nanodrop;	<b>GeneID (NCBI):</b> 8942	<b>CloneNo.:</b> 251437C8
<b>Source:</b> Rabbit	<b>UNIPROT ID:</b> Q16719	<b>Recommended Dilutions:</b> WB: 1:5000-1:50000 IF/ICC: 1:200-1:800
<b>Isotype:</b> IgG	<b>Full Name:</b> kynureninase (L-kynurenine hydrolase)	
<b>Immunogen Catalog Number:</b> AG2365	<b>Calculated MW:</b> 465aa,52 kDa; 307aa,35 kDa	
	<b>Observed MW:</b> 45-52 kDa	

## Applications

<b>Tested Applications:</b> WB, IF/ICC, ELISA	<b>Positive Controls:</b>
<b>Species Specificity:</b> human	<b>WB :</b> HeLa cells, HepG2 cells, A549 cells, THP-1 cells <b>IF/ICC :</b> A549 cells,

## Background Information

KYNU(kynureninase) is also named as L-kynurenine hydrolase and belongs to the kynureninase family. It is a pyridoxal-5'-phosphate-(pyridoxal-P)-dependent enzyme that catalyses the cleavage of L-kynurenine and L-3-hydroxykynurenine into anthranilic and 3-hydroxyanthranilic acids, respectively(PMID:8706755). In SDS-PAGE, it can detect a 48 kDa band lower than the predicted molecular weight of 52 kDa due to limited proteolysis of the enzyme which might occur during handling of the protein(PMID:8706755).

## Storage

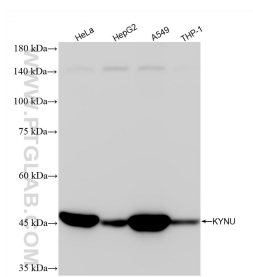
**Storage:**  
Store at -20°C. Stable for one year after shipment.  
**Storage Buffer:**  
PBS with 0.02% sodium azide and 50% glycerol, pH7.3  
**Aliquoting is unnecessary for -20°C storage**

\*\*\* 20ul sizes contain 0.1% BSA

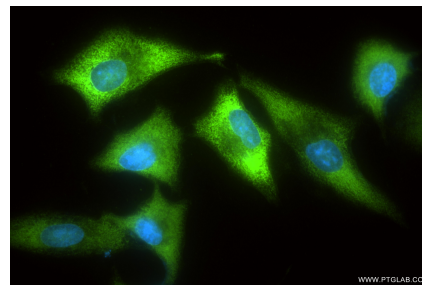
For technical support and original validation data for this product please contact:  
T: 1 (888) 4PTGLAB (1-888-478-4522) (toll free in USA), or 1(312) 455-8498 (outside USA)  
E: [proteintech@ptglab.com](mailto:proteintech@ptglab.com)  
W: [ptglab.com](http://ptglab.com)

This product is exclusively available under Proteintech Group brand and is not available to purchase from any other manufacturer.

## Selected Validation Data



Various lysates were subjected to SDS PAGE followed by western blot with 86555-4-RR (KYNU antibody) at dilution of 1:10000 incubated at room temperature for 1.5 hours.



Immunofluorescent analysis of (-20°C Ethanol) fixed A549 cells using KYNU antibody (86555-4-RR, Clone: 251437C8) at dilution of 1:400 and CoraLite® 488-Conjugated Goat Anti-Rabbit IgG(H+L) (SA00013-2).