

For Research Use Only

# PSMD4 Recombinant monoclonal antibody

Catalog Number: 86558-1-RR



## Basic Information

<b>Catalog Number:</b> 86558-1-RR	<b>GenBank Accession Number:</b> BC002365	<b>Purification Method:</b> Protein A purification
<b>Size:</b> 100ul, Concentration: 1000 µg/ml by Nanodrop;	<b>GeneID (NCBI):</b> 5710	<b>CloneNo.:</b> 251460G8
<b>Source:</b> Rabbit	<b>UNIPROT ID:</b> P55036	<b>Recommended Dilutions:</b> WB: 1:5000-1:50000 IHC: 1:300-1:1200 IF/ICC: 1:50-1:500
<b>Isotype:</b> IgG	<b>Full Name:</b> proteasome (prosome, macropain) 26S subunit, non-ATPase, 4	
<b>Immunogen Catalog Number:</b> AG6691	<b>Calculated MW:</b> 41 kDa	
	<b>Observed MW:</b> 50 kDa	

## Applications

**Tested Applications:**  
WB, IHC, IF/ICC, ELISA

**Species Specificity:**  
human, mouse, rat

**Note-IHC: suggested antigen retrieval with TE buffer pH 9.0; (\*) Alternatively, antigen retrieval may be performed with citrate buffer pH 6.0**

**Positive Controls:**

**WB :** HeLa cells, Jurkat cells, K-562 cells, Raji cells, NIH/3T3 cells, RAW 264.7 cells, HSC-T6 cells

**IHC :** mouse testis tissue,

**IF/ICC :** HeLa cells,

## Background Information

PSMD4, also named as MCB1, AF or ASF, belongs to the proteasome subunit S5A family. PSMD4 is a 50-kD subunit of the regulatory complex of the 26S proteasome. It binds and presumably selects ubiquitin-conjugates for destruction. PSMD4 displays selectivity for longer polyubiquitin chains. It modulates intestinal fluid secretion. PSMD4 is exposed on the sperm acrosomal surface, a notion that was further supported by the binding of non-cell-permeant, biotinylated proteasomal inhibitor ZL3VS to the sperm acrosome. It is involved in the sperm-ZP penetration during fertilization. (PMID: 20526895)

## Storage

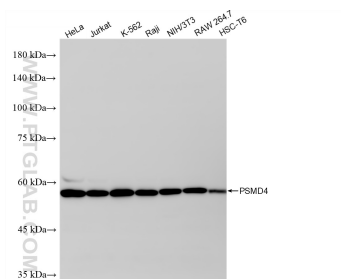
**Storage:**  
Store at -20°C. Stable for one year after shipment.  
**Storage Buffer:**  
PBS with 0.02% sodium azide and 50% glycerol, pH7.3  
**Aliquoting is unnecessary for -20°C storage**

\*\*\* 20ul sizes contain 0.1% BSA

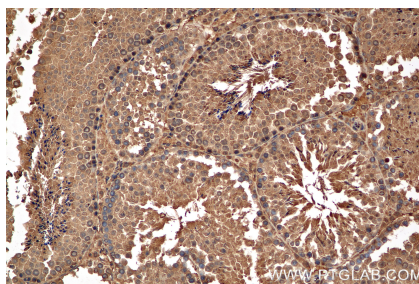
For technical support and original validation data for this product please contact:  
T: 1 (888) 4PTGLAB (1-888-478-4522) (toll free in USA), or 1(312) 455-8498 (outside USA)  
E: proteintech@ptglab.com  
W: ptglab.com

This product is exclusively available under Proteintech Group brand and is not available to purchase from any other manufacturer.

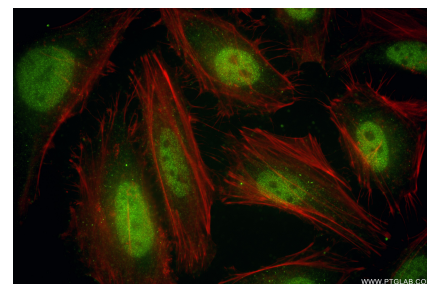
## Selected Validation Data



Various lysates were subjected to SDS PAGE followed by western blot with 86558-1-RR (PSMD4 antibody) at dilution of 1:10000 incubated at room temperature for 1.5 hours.



Immunohistochemical analysis of paraffin-embedded mouse testis tissue slide using 86558-1-RR (PSMD4 antibody) at dilution of 1:600 (under 20x lens). Heat mediated antigen retrieval with Tris-EDTA buffer (pH 9.0).



Immunofluorescent analysis of (4% PFA) fixed HeLa cells using PSMD4 antibody (86558-1-RR, Clone: 251460G8 ) at dilution of 1:200 and CoraLite®488-Conjugated Goat Anti-Rabbit IgG(H+L) (SA00013-2), CL594-Phalloidin (red).