

For Research Use Only

LAIR2 Recombinant monoclonal antibody, PBS Only (Detector)

Catalog Number: 86559-2-PBS



Basic Information

Catalog Number: 86559-2-PBS	GenBank Accession Number: BC069366	Purification Method: Protein A purification
Size: 100ug, Concentration: 1 mg/ml by Nanodrop;	GeneID (NCBI): 3904	CloneNo.: 250338D1
Source: Rabbit	UNIPROT ID: Q6I554	
Isotype: IgG	Full Name: leukocyte-associated immunoglobulin-like receptor 2	
Immunogen Catalog Number: EG4247	Calculated MW: 152 aa, 16 kDa	

Applications

Tested Applications:
Sandwich ELISA, Indirect ELISA

Species Specificity:
human

Product Information

86559-2-PBS targets LAIR2 as part of a matched antibody pair:

MP02633-1: 86559-3-PBS capture and 86559-2-PBS detection (validated in Sandwich ELISA)

Unconjugated rabbit recombinant monoclonal antibody in PBS only (BSA and azide free) storage buffer at a concentration of 1 mg/mL, ready for conjugation. Created using Proteintech's proprietary in-house recombinant technology. Recombinant production enables unrivalled batch-to-batch consistency, easy scale-up, and future security of supply.

This conjugation ready format makes antibodies ideal for use in many applications including: ELISAs, multiplex assays requiring matched pairs, mass cytometry, and multiplex imaging applications. Antibody use should be optimized by the end user for each application and assay.

Storage

Storage:
Store at -80°C.

Storage Buffer:
PBS only, pH7.3

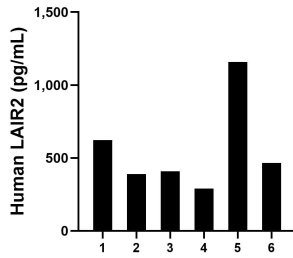
For technical support and original validation data for this product please contact:

T: 1 (888) 4PTGLAB (1-888-478-4522) (toll free in USA), or 1(312) 455-8498 (outside USA)

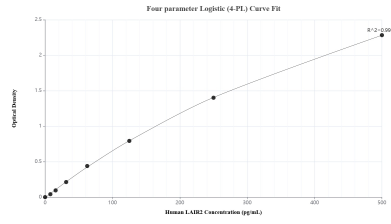
E: proteintech@ptglab.com
W: ptglab.com

This product is exclusively available under Proteintech Group brand and is not available to purchase from any other manufacturer.

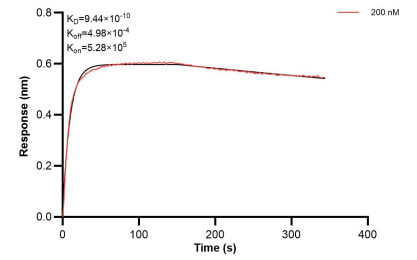
Selected Validation Data



Urine of six individual healthy human donors was measured. The LAIR2 concentration of detected samples was determined to be 555.7 pg/mL with a range of 289.8-1,158.5 pg/mL.



Sandwich ELISA standard curve of MP02633-1, Human LAIR2 Recombinant Matched Antibody Pair - PBS only. 86559-3-PBS was coated to a plate as the capture antibody and incubated with serial dilutions of standard Eg4247. 86559-2-PBS was HRP conjugated as the detection antibody. Range: 7.81-500 pg/mL



Bi-layer interferometry (BLI) kinetic assay of 86559-2-PBS against Human LAIR2 was performed. The affinity constant is 0.944 nM.