

For Research Use Only

RAB12 Recombinant antibody, PBS Only

Catalog Number: 86560-1-PBS



Basic Information

Catalog Number:

86560-1-PBS

Size:

100ug, Concentration: 1 mg/ml by Nanodrop;

Source:

Rabbit

Isotype:

IgG

Immunogen Catalog Number:

AG31627

GenBank Accession Number:

NM_001025300

GeneID (NCBI):

201475

UNIPROT ID:

Q6IQ22

Full Name:

RAB12, member RAS oncogene family

Calculated MW:

27KD

Observed MW:

27 kDa

Purification Method:

Protein A purification

CloneNo.:

251398D2

Applications

Tested Applications:

WB, Indirect ELISA

Species Specificity:

human, mouse, rat

Background Information

RAB12 belongs to the small GTPase superfamily and Rab family. RAB12 locates in Golgi apparatus membrane. Rab12, a previously uncharacterized Rab isoform, is mainly localized at TfR-positive recycling endosomes and is specifically involved in TfR degradation. Rab12 is a regulator of LRRK2 and its activation by damaged lysosomes.

Storage

Storage:

Store at -80°C.

Storage Buffer:

PBS only, pH7.3

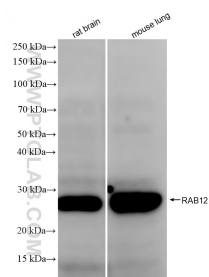
For technical support and original validation data for this product please contact:

T: 1 (888) 4PTGLAB (1-888-478-4522) (toll free in USA), or 1(312) 455-8498 (outside USA)

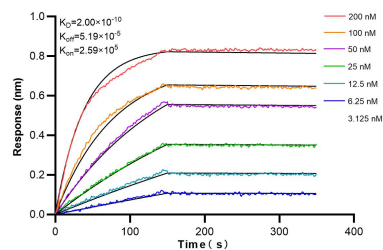
E: proteintech@ptglab.com
W: ptglab.com

This product is exclusively available under Proteintech Group brand and is not available to purchase from any other manufacturer.

Selected Validation Data



Various lysates were subjected to SDS PAGE followed by western blot with 86560-1-RR (RAB12 antibody) at dilution of 1:5000 incubated at room temperature for 1.5 hours. This data was developed using the same antibody clone with 86560-1-PBS in a different storage buffer formulation.



Biolayer interferometry (BLI) kinetic assays of 86560-1-RR against Human RAB12 were performed. The affinity constant is 0.200 nM.