

For Research Use Only

# RCAN2 Recombinant monoclonal antibody, PBS Only (Detector)

Catalog Number: 86561-2-PBS



## Basic Information

<b>Catalog Number:</b> 86561-2-PBS	<b>GenBank Accession Number:</b> BC038509	<b>Purification Method:</b> Protein A purification
<b>Size:</b> 100ug , Concentration: 1 mg/ml by Nanodrop;	<b>GeneID (NCBI):</b> 10231	<b>CloneNo.:</b> 251381F2
<b>Source:</b> Rabbit	<b>UNIPROT ID:</b> Q14206	
<b>Isotype:</b> IgG	<b>Full Name:</b> regulator of calcineurin 2	
<b>Immunogen Catalog Number:</b> AG3597	<b>Calculated MW:</b> 225 aa, 25 kDa	

## Applications

**Tested Applications:**  
Sandwich ELISA, Indirect ELISA

**Species Specificity:**  
human

## Product Information

86561-2-PBS targets RCAN2 as part of a matched antibody pair:

MP02659-1: 86561-3-PBS capture and 86561-2-PBS detection (validated in Sandwich ELISA)

Unconjugated rabbit recombinant monoclonal antibody in PBS only (BSA and azide free) storage buffer at a concentration of 1 mg/mL, ready for conjugation. Created using Proteintech's proprietary in-house recombinant technology. Recombinant production enables unrivalled batch-to-batch consistency, easy scale-up, and future security of supply.

This conjugation ready format makes antibodies ideal for use in many applications including: ELISAs, multiplex assays requiring matched pairs, mass cytometry, and multiplex imaging applications. Antibody use should be optimized by the end user for each application and assay.

## Storage

**Storage:**  
Store at -80°C.  
**Storage Buffer:**  
PBS only, pH7.3

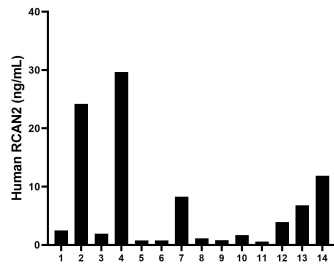
For technical support and original validation data for this product please contact:

T: 1 (888) 4PTGLAB (1-888-478-4522) (toll free in USA), or 1(312) 455-8498 (outside USA)

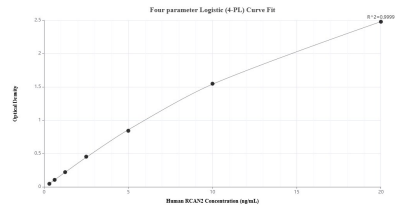
E: [proteintech@ptglab.com](mailto:proteintech@ptglab.com)  
W: [ptglab.com](http://ptglab.com)

**This product is exclusively available under Proteintech Group brand and is not available to purchase from any other manufacturer.**

## Selected Validation Data



Serum of fourteen individual healthy human donors was measured. The human RCAN2 concentration of detected samples was determined to be 6.78 ng/mL with a range of 0.58 - 29.64 ng/mL.



Sandwich ELISA standard curve of MP02659-1, Human RCAN2 Recombinant Matched Antibody Pair - PBS only. 86561-3-PBS was coated to a plate as the capture antibody and incubated with serial dilutions of standard Ag3597. 86561-2-PBS was HRP conjugated as the detection antibody. Range: 0.313-20 ng/mL