

For Research Use Only

CCL12/MCP-5 Recombinant antibody

Catalog Number: 86565-1-RR



Basic Information

Catalog Number: 86565-1-RR	GenBank Accession Number: NM_011331.2	Purification Method: Protein A purification
Size: 100ul , Concentration: 1000 µg/ml by Nanodrop;	GeneID (NCBI): 20293	CloneNo.: 250386A9
Source: Rabbit	UNIPROT ID: Q62401	Recommended Dilutions: WB: 1:2000-1:10000
Isotype: IgG	Full Name: chemokine (C-C motif) ligand 12	
Immunogen Catalog Number: EG3315	Calculated MW: 12KD	

Applications

Tested Applications: WB, ELISA	Positive Controls:
Species Specificity: mouse	WB : Transfected with Mouse Ccl12 Transfected HEK-293T cells,

Background Information

CCL12 (monocyte chemotactic protein-5, MCP-5) is a murine CC-chemokine encoded within the chemokine cluster on chromosome 11. It is the closest murine homologue of human MCP-1 (CCL2), sharing 66 % amino-acid identity, and signals exclusively through the G-protein-coupled receptor CCR2. CCL12 is produced by stromal cells, astrocytes, macrophages and, under inflammatory conditions, by lung and bone-marrow stromal cells. Its receptor, CCR2, is expressed on monocytes, memory T cells, NK cells, dendritic cells and basophils. Consequently, CCL12 potentially chemoattracts monocytes, lymphocytes, eosinophils and bone-marrow-derived fibrocytes, but not neutrophils.

Storage

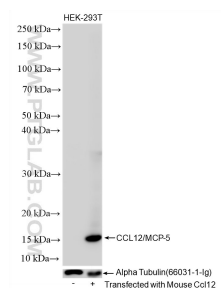
Storage:
Store at -20°C. Stable for one year after shipment.
Storage Buffer:
PBS with 0.02% sodium azide and 50% glycerol, pH7.3
Aliquoting is unnecessary for -20°C storage

*** 20ul sizes contain 0.1% BSA

For technical support and original validation data for this product please contact:
T: 1 (888) 4PTGLAB (1-888-478-4522) (toll free in USA), or 1(312) 455-8498 (outside USA)
E: proteintech@ptglab.com
W: ptglab.com

This product is exclusively available under Proteintech Group brand and is not available to purchase from any other manufacturer.

Selected Validation Data



Non-transfected and CCL12-transfected HEK-293T cell lysates were subjected to SDS PAGE followed by western blot with 86565-1-RR (Ccl12 antibody) at a dilution of 1:5000, incubated at room temperature for 1.5 hours.