

For Research Use Only

PCDH17 Recombinant monoclonal antibody, PBS Only (Detector)

Catalog Number: 86566-3-PBS



Basic Information

Catalog Number: 86566-3-PBS	GenBank Accession Number: BC028165	Purification Method: Protein A purification
Size: 100ug , Concentration: 1 mg/ml by Nanodrop;	GeneID (NCBI): 27253	CloneNo.: 251404C10
Source: Rabbit	UNIPROT ID: O14917	
Isotype: IgG	Full Name: protocadherin 17	
Immunogen Catalog Number: EG4889	Calculated MW: 1159 aa, 126 kDa	

Applications

Tested Applications:
Sandwich ELISA, Indirect ELISA

Species Specificity:
human

Product Information

86566-3-PBS targets PCDH17 as part of a matched antibody pair:

MP02677-1: 86566-1-PBS capture and 86566-3-PBS detection (validated in Sandwich ELISA)

Unconjugated rabbit recombinant monoclonal antibody in PBS only (BSA and azide free) storage buffer at a concentration of 1 mg/mL, ready for conjugation. Created using Proteintech's proprietary in-house recombinant technology. Recombinant production enables unrivalled batch-to-batch consistency, easy scale-up, and future security of supply.

This conjugation ready format makes antibodies ideal for use in many applications including: ELISAs, multiplex assays requiring matched pairs, mass cytometry, and multiplex imaging applications. Antibody use should be optimized by the end user for each application and assay.

Storage

Storage:
Store at -80°C.

Storage Buffer:
PBS only, pH7.3

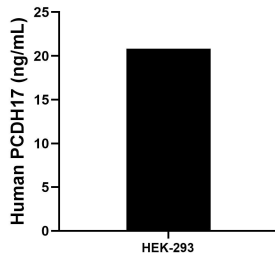
For technical support and original validation data for this product please contact:

T: 1 (888) 4PTGLAB (1-888-478-4522) (toll free in USA), or 1(312) 455-8498 (outside USA)

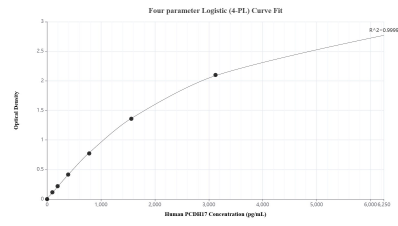
E: proteintech@ptglab.com
W: ptglab.com

This product is exclusively available under Proteintech Group brand and is not available to purchase from any other manufacturer.

Selected Validation Data



The mean PCDH17 concentration was determined to be 20.8 ng/mL in HEK-293 cell extract based on a 1.2 mg/mL extract load.



Sandwich ELISA standard curve of MP02677-1, Human PCDH17 Recombinant Matched Antibody Pair - PBS only. 86566-1-PBS was coated to a plate as the capture antibody and incubated with serial dilutions of standard Eg4889. 86566-3-PBS was HRP conjugated as the detection antibody. Range: 97.7-6250 pg/mL.