

For Research Use Only

Mouse Mmp8 Recombinant monoclonal antibody, PBS Only (Detector)

Catalog Number:86567-1-PBS



Basic Information

Catalog Number: 86567-1-PBS	GenBank Accession Number: NM_008611.4	Purification Method: Protein A purification
Size: 100ug , Concentration: 1 mg/ml by Nanodrop;	GeneID (NCBI): 17394	CloneNo.: 250323D5
Source: Rabbit	UNIPROT ID: O70138	
Isotype: IgG	Full Name: matrix metalloproteinase 8	
Immunogen Catalog Number: EG3161	Calculated MW: 53 kDa	

Applications

Tested Applications:
Sandwich ELISA, Indirect ELISA

Species Specificity:
mouse

Product Information

86567-1-PBS targets Mmp8 as part of a matched antibody pair:

MP02831-1: 86567-2-PBS capture and 86567-1-PBS detection (validated in Sandwich ELISA)

Unconjugated rabbit recombinant monoclonal antibody in PBS only (BSA and azide free) storage buffer at a concentration of 1 mg/mL, ready for conjugation. Created using Proteintech's proprietary in-house recombinant technology. Recombinant production enables unrivalled batch-to-batch consistency, easy scale-up, and future security of supply.

This conjugation ready format makes antibodies ideal for use in many applications including: ELISAs, multiplex assays requiring matched pairs, mass cytometry, and multiplex imaging applications. Antibody use should be optimized by the end user for each application and assay.

Storage

Storage:
Store at -80°C.

Storage Buffer:
PBS only, pH7.3

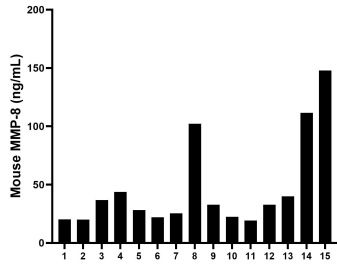
For technical support and original validation data for this product please contact:

T: 1 (888) 4PTGLAB (1-888-478-4522) (toll free in USA), or 1(312) 455-8498 (outside USA)

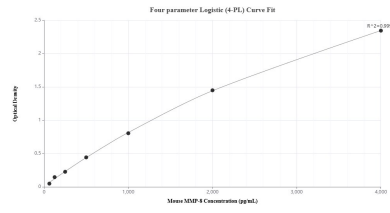
E: proteintech@ptglab.com
W: ptglab.com

This product is exclusively available under Proteintech Group brand and is not available to purchase from any other manufacturer.

Selected Validation Data



Serum of mice was measured. The mouse MMP-8 concentration of detected samples was determined to be 47.01 ng/mL with a range of 19.2 - 147.85 ng/mL.



Sandwich ELISA standard curve of MP02831-1, Mouse MMP-8 Recombinant Matched Antibody Pair - PBS only. 86567-2-PBS was coated to a plate as the capture antibody and incubated with serial dilutions of standard Eg3161. 86567-1-PBS was HRP conjugated as the detection antibody. Range: 62.5-4000 pg/mL