

For Research Use Only

# RIPK3 Recombinant monoclonal antibody, PBS Only

Catalog Number: 86568-2-PBS



## Basic Information

**Catalog Number:**

86568-2-PBS

**Size:**

100ug, Concentration: 1 mg/ml by Nanodrop;

**Source:**

Rabbit

**Isotype:**

IgG

**Immunogen Catalog Number:**

AG30337

**GenBank Accession Number:**

BC062584

**GeneID (NCBI):**

11035

**UNIPROT ID:**

Q9Y572

**Full Name:**

receptor-interacting serine-threonine kinase 3

**Calculated MW:**

518 aa, 57 kDa

**Observed MW:**

57 kDa

**Purification Method:**

Protein A purification

**CloneNo.:**

251363G12

## Applications

**Tested Applications:**

WB, IHC, IF/ICC, Indirect ELISA

**Species Specificity:**

human

## Background Information

RIPK3, also named as RIP3, a Ser/Thr kinase of RIP (Receptor Interacting Protein) family, is recruited to the TNFR1 signaling complex through RIP and has been shown to mediate apoptosis induction and NF- $\kappa$ B activation. RIPK3 is a nucleocytoplasmic shuttling protein and its unconventional nuclear localization signal (NLS, 442-472 aa) is sufficient to trigger apoptosis in the nucleus (PMID:18533105). It has 3 isoforms produced by alternative splicing. RIPK3 might form a homodimer within cells, and its apoptotic activity may not be required for this dimerization (PMID:18533105).

## Storage

**Storage:**

Store at -80°C.

**Storage Buffer:**

PBS only, pH7.3

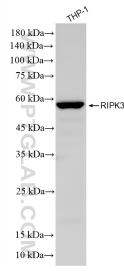
For technical support and original validation data for this product please contact:

T: 1 (888) 4PTGLAB (1-888-478-4522) (toll free in USA), or 1(312) 455-8498 (outside USA)

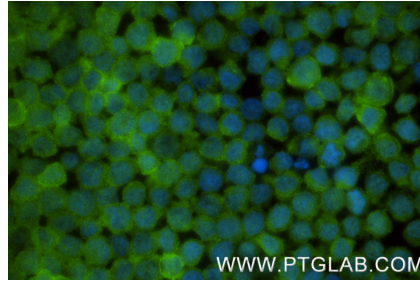
E: [proteintech@ptglab.com](mailto:proteintech@ptglab.com)  
W: [ptglab.com](http://ptglab.com)

**This product is exclusively available under Proteintech Group brand and is not available to purchase from any other manufacturer.**

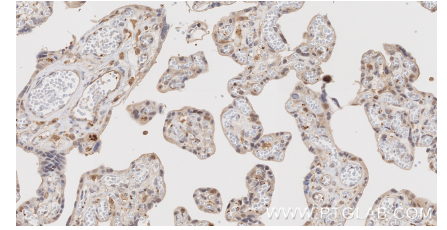
## Selected Validation Data



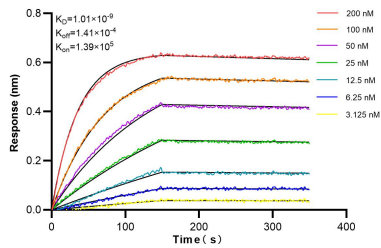
THP-1 cells were subjected to SDS PAGE followed by western blot with 86568-2-RR (RIPK3 antibody) at dilution of 1:3000 incubated at room temperature for 1.5 hours. This data was developed using the same antibody clone with 86568-2-PBS in a different storage buffer formulation.



Immunofluorescent analysis of (4% PFA) fixed THP-1 cells using RIPK3 antibody (86568-2-RR, Clone: 251363G12) at dilution of 1:200 and CoraLite® 488-Conjugated Goat Anti-Rabbit IgG(H+L) (SA00013-2). This data was developed using the same antibody clone with 86568-2-PBS in a different storage buffer formulation.



Immunohistochemical analysis of paraffin-embedded human placenta tissue slide using 86568-2-RR (RIPK3 antibody) at dilution of 1:400 (under 40x lens). Heat mediated antigen retrieval with Tris-EDTA buffer (pH 9.0). This data was developed using the same antibody clone with 86568-2-PBS in a different storage buffer formulation.



Biacore BLI kinetic assays of 86568-2-RR against Human RIPK3 were performed. The affinity constant is 1.01 nM.