

For Research Use Only

GYPC Recombinant antibody

Catalog Number: 86574-1-RR



Basic Information

Catalog Number: 86574-1-RR	GenBank Accession Number: BC104246	Purification Method: Protein A purification
Size: 100ul , Concentration: 1000 µg/ml by Nanodrop;	GeneID (NCBI): 2995	CloneNo.: 251100D5
Source: Rabbit	UNIPROT ID: P04921	Recommended Dilutions: WB: 1:500-1:2000
Isotype: IgG	Full Name: glycophorin C (Gerbich blood group)	
Immunogen Catalog Number: EG4905	Calculated MW: 14 kDa	
	Observed MW: 35-40 kDa	

Applications

Tested Applications: WB, ELISA	Positive Controls: WB : K-562 cells, MDA-MB-453 cells, Ramos cells, THP-1 cells, HL-60 cells, mouse liver tissue, rat liver tissue
Species Specificity: human, mouse, rat	

Background Information

Glycophorin-C, encoded by the GYPC gene, is a minor sialoglycoprotein in human erythrocyte membranes. Glycophorin-C interacts with protein 4.1R (EPB41) and plays an important role in regulating the mechanical stability of red cells. Glycophorin C acts as the receptor for the Plasmodium falciparum erythrocyte binding ligand PfEBP-2 (baebl). Glycophorin-D, also encoded by the GYPC gene, is now known as a variant of Glycophorin-C. This antibody is raised against the full-length protein of human Glycophorin-C. The apparent molecular weight of Glycophorin-C is larger than the calculated molecular weight due to glycosylation.

Storage

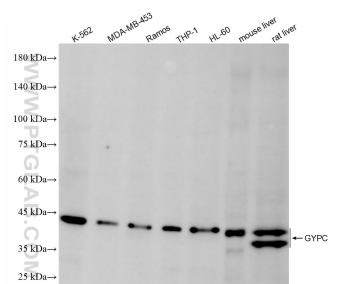
Storage:
Store at -20°C. Stable for one year after shipment.
Storage Buffer:
PBS with 0.02% sodium azide and 50% glycerol, pH7.3
Aliquoting is unnecessary for -20°C storage

*** 20ul sizes contain 0.1% BSA

For technical support and original validation data for this product please contact:
T: 1 (888) 4PTGLAB (1-888-478-4522) (toll free in USA), or 1(312) 455-8498 (outside USA)
E: proteintech@ptglab.com
W: ptglab.com

This product is exclusively available under Proteintech Group brand and is not available to purchase from any other manufacturer.

Selected Validation Data



Various lysates were subjected to SDS PAGE followed by western blot with 86574-1-RR (GYPC antibody) at dilution of 1:1000 incubated at room temperature for 1.5 hours.