

For Research Use Only

PPP1R12C Recombinant monoclonal antibody

Catalog Number: 86583-1-RR



Basic Information

Catalog Number: 86583-1-RR	GenBank Accession Number: BC008030	Purification Method: Protein A purification
Size: 100ul , Concentration: 1000 µg/ml by Nanodrop;	GeneID (NCBI): 54776	CloneNo.: 251442C1
Source: Rabbit	UNIPROT ID: Q9BZL4	Recommended Dilutions: WB: 1:2000-1:10000
Isotype: IgG	Full Name: protein phosphatase 1, regulatory (inhibitor) subunit 12C	
Immunogen Catalog Number: AG18559	Calculated MW: 782 aa, 85 kDa	
	Observed MW: 90-100 kDa	

Applications

Tested Applications: WB, ELISA	Positive Controls: WB : Jurkat cells, HEK-293T cells, Raji cells
Species Specificity: human	

Background Information

PPP1R12C is a subunit of myosin phosphatase. PPP1R12C regulates the catalytic activity of protein phosphatase 1 delta and assembly of the actin cytoskeleton.

Storage

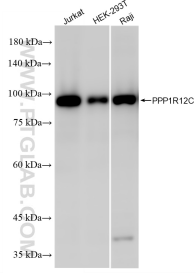
Storage:
Store at -20°C. Stable for one year after shipment.
Storage Buffer:
PBS with 0.02% sodium azide and 50% glycerol, pH7.3
Aliquoting is unnecessary for -20°C storage

***** 20ul sizes contain 0.1% BSA**

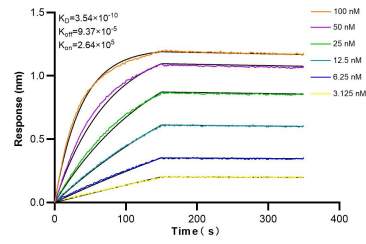
For technical support and original validation data for this product please contact:
T: 1 (888) 4PTGLAB (1-888-478-4522) (toll free in USA), or 1(312) 455-8498 (outside USA)
E: proteintech@ptglab.com
W: ptglab.com

This product is exclusively available under Proteintech Group brand and is not available to purchase from any other manufacturer.

Selected Validation Data



Various lysates were subjected to SDS PAGE followed by western blot with 86583-1-RR (PPP1R12C antibody) at dilution of 1:5000 incubated at room temperature for 1.5 hours.



Biolayer interferometry (BLI) kinetic assays of 86583-1-RR against Human PPP1R12C were performed. The affinity constant is 0.354 nM.