

For Research Use Only

GLRX3 Recombinant monoclonal antibody, PBS Only (Capture)

Catalog Number: 86587-1-PBS



Basic Information

Catalog Number: 86587-1-PBS	GenBank Accession Number: BC014372	Purification Method: Protein A purification
Size: 100ug , Concentration: 1 mg/ml by Nanodrop;	GeneID (NCBI): 10539	CloneNo.: 251530F9
Source: Rabbit	UNIPROT ID: O76003	
Isotype: IgG	Full Name: glutaredoxin 3	
Immunogen Catalog Number: AG1775	Calculated MW: 37 kDa	
	Observed MW: 37-40 kDa	

Applications

Tested Applications:
WB, Cytometric bead array, Indirect ELISA

Species Specificity:
human, mouse, rat

Product Information

86587-1-PBS targets GLRX3 as part of a matched antibody pair:

MP02531-1: 86587-1-PBS capture and 86587-2-PBS detection (validated in Cytometric bead array)

Unconjugated rabbit recombinant monoclonal antibody in PBS only (BSA and azide free) storage buffer at a concentration of 1 mg/mL, ready for conjugation. Created using Proteintech's proprietary in-house recombinant technology. Recombinant production enables unrivalled batch-to-batch consistency, easy scale-up, and future security of supply.

This conjugation ready format makes antibodies ideal for use in many applications including: ELISAs, multiplex assays requiring matched pairs, mass cytometry, and multiplex imaging applications. Antibody use should be optimized by the end user for each application and assay.

Background Information

GLRX3 (Glutaredoxin-3) is also named as PICOT, TXNL2. Mammalian glutaredoxin 3 is an essential protein involved in the regulation of signal transduction, for instance during immune cell activation and development of cardiac hypertrophy, presumably in response to redox signals (PMID:20226171). Glrx3 could take a pivotal role in colon and lung cancer cells during the tumorigenesis, which is expressed in lung and colon cancers consistently and preferentially (PMID:19797004).

Storage

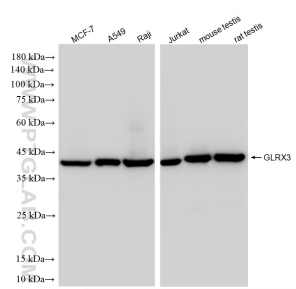
Storage:
Store at -80°C.

Storage Buffer:
PBS only, pH7.3

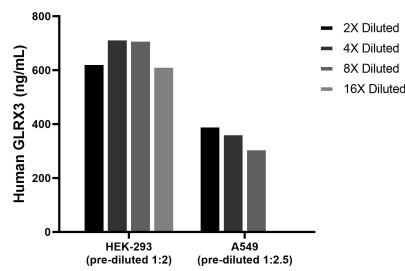
For technical support and original validation data for this product please contact:
T: 1 (888) 4PTGLAB (1-888-478-4522) (toll free in USA), or 1(312) 455-8498 (outside USA)
E: proteintech@ptglab.com
W: ptglab.com

This product is exclusively available under Proteintech Group brand and is not available to purchase from any other manufacturer.

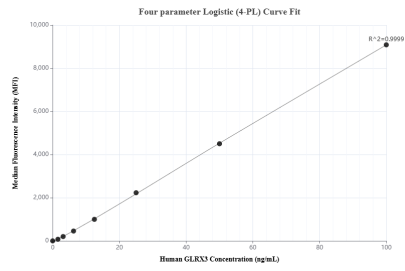
Selected Validation Data



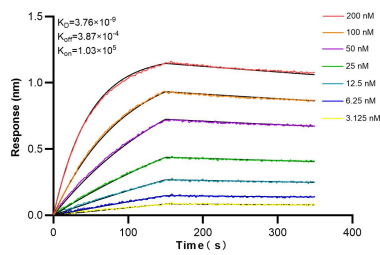
Various lysates were subjected to SDS PAGE followed by western blot with 86587-1-RR (GLRX3 antibody) at dilution of 1:10000 incubated at room temperature for 1.5 hours. This data was developed using the same antibody clone with 86587-1-PBS in a different storage buffer formulation.



The mean GLRX3 concentration was determined to be 669.5 ng/mL in HEK-293 cell extract based on a 1.1 mg/mL extract load, 358.1 ng/mL in A549 cell extract based on a 1.2 mg/mL extract load.



Cytometric bead array standard curve of MP02531-1, GLRX3 Recombinant Matched Antibody Pair, PBS Only. Capture antibody: 86587-1-PBS. Detection antibody: 86587-2-PBS. Standard: Ag1775. Range: 1.562-100 ng/mL.



Biolayer interferometry (BLI) kinetic assays of 86587-1-RR against Human GLRX3 were performed. The affinity constant is 3.76 nM.