

For Research Use Only

# GLRX3 Recombinant monoclonal antibody

Catalog Number: 86587-1-RR



## Basic Information

Catalog Number:	86587-1-RR	GenBank Accession Number:	BC014372	Purification Method:	Protein A purification
Size:	100ul , Concentration: 1000 µg/ml by Nanodrop;	GeneID (NCBI):	10539	CloneNo.:	251530F9
Source:	Rabbit	UNIPROT ID:	O76003	Recommended Dilutions:	WB: 1:5000-1:50000
Isotype:	IgG	Full Name:	glutaredoxin 3		
Immunogen Catalog Number:	AG1775	Calculated MW:	37 kDa		
		Observed MW:	37-40 kDa		

## Applications

Tested Applications:	WB, ELISA	Positive Controls:	WB : MCF-7 cells, A549 cells, Raji cells, Jurkat cells, mouse testis tissue, rat testis tissue
Species Specificity:	human, mouse, rat		

## Background Information

GLRX3 (Glutaredoxin-3) is also named as PICOT, TXNL2. Mammalian glutaredoxin 3 is an essential protein involved in the regulation of signal transduction, for instance during immune cell activation and development of cardiac hypertrophy, presumably in response to redox signals (PMID:20226171). Glnx3 could take a pivotal role in colon and lung cancer cells during the tumorigenesis, which is expressed in lung and colon cancers consistently and preferentially (PMID:19797004).

## Storage

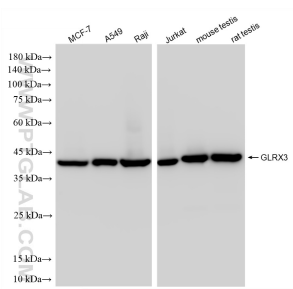
**Storage:**  
Store at -20°C. Stable for one year after shipment.  
**Storage Buffer:**  
PBS with 0.02% sodium azide and 50% glycerol, pH7.3  
Aliquoting is unnecessary for -20°C storage

\*\*\* 20ul sizes contain 0.1% BSA

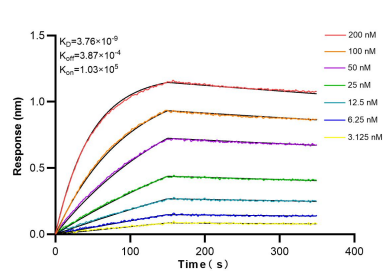
For technical support and original validation data for this product please contact:  
T: 1 (888) 4PTGLAB (1-888-478-4522) (toll free in USA), or 1(312) 455-8498 (outside USA)  
E: [proteintech@ptglab.com](mailto:proteintech@ptglab.com)  
W: [ptglab.com](http://ptglab.com)

This product is exclusively available under Proteintech Group brand and is not available to purchase from any other manufacturer.

## Selected Validation Data



Various lysates were subjected to SDS PAGE followed by western blot with 86587-1-RR (GLRX3 antibody) at dilution of 1:10000 incubated at room temperature for 1.5 hours.



Biolayer interferometry (BLI) kinetic assays of 86587-1-RR against Human GLRX3 were performed. The affinity constant is 3.76 nM.