

For Research Use Only

CD32 Recombinant monoclonal antibody, PBS Only (Capture)

Catalog Number: 86588-2-PBS



Basic Information

Catalog Number: 86588-2-PBS	GenBank Accession Number: NM_001136219.3	Purification Method: Protein A purification
Size: 100ug, Concentration: 1 mg/ml by Nanodrop;	GeneID (NCBI): 2212	CloneNo.: 251087D9
Source: Rabbit	UNIPROT ID: P12318-1	
Isotype: IgG	Full Name: Fc fragment of IgG, low affinity IIa, receptor (CD32)	
Immunogen Catalog Number: EG2713	Calculated MW: 35 kDa	
	Observed MW: 40 kDa	

Applications

Tested Applications:
WB, IF/ICC, Cytometric bead array, Indirect ELISA

Species Specificity:
human

Product Information

86588-2-PBS targets CD32 as part of a matched antibody pair:

MP02532-1: 86588-2-PBS capture and 86588-1-PBS detection (validated in Cytometric bead array)

Unconjugated rabbit recombinant monoclonal antibody in PBS only (BSA and azide free) storage buffer at a concentration of 1 mg/mL, ready for conjugation. Created using Proteintech's proprietary in-house recombinant technology. Recombinant production enables unrivalled batch-to-batch consistency, easy scale-up, and future security of supply.

This conjugation ready format makes antibodies ideal for use in many applications including: ELISAs, multiplex assays requiring matched pairs, mass cytometry, and multiplex imaging applications. Antibody use should be optimized by the end user for each application and assay.

Background Information

CD32 (FcγRII) is a 40 kD transmembrane glycoprotein that binds to the Fc region of IgG with low affinity. CD32 is present on phagocytic cells such as macrophages and neutrophils, and is involved in the process of phagocytosis and clearing of immune complexes.

Storage

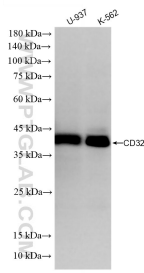
Storage:
Store at -80°C.

Storage Buffer:
PBS only, pH7.3

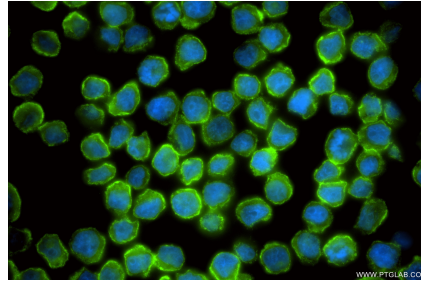
For technical support and original validation data for this product please contact:
T: 1 (888) 4PTGLAB (1-888-478-4522) (toll free in USA), or 1(312) 455-8498 (outside USA)
E: proteintech@ptglab.com
W: ptglab.com

This product is exclusively available under Proteintech Group brand and is not available to purchase from any other manufacturer.

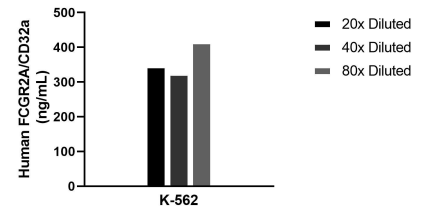
Selected Validation Data



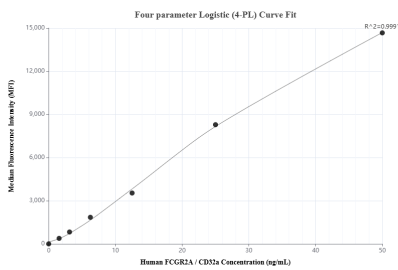
Various lysates were subjected to SDS PAGE followed by western blot with 86588-2-RR (FCGR2A+FCGR2B(CD32) antibody) at dilution of 1:1000 incubated at room temperature for 1.5 hours. This data was developed using the same antibody clone with 86588-2-PBS in a different storage buffer formulation.



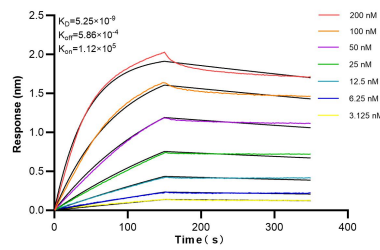
Immunofluorescent analysis of (4% PFA) fixed U-937 cells using CD32 antibody (86588-2-RR, Clone: 251087D9) at dilution of 1:200 and CoraLite® 488-Conjugated Goat Anti-Rabbit IgG(H+L) (SA00013-2). This data was developed using the same antibody clone with 86588-2-PBS in a different storage buffer formulation.



The mean FCGR2A / CD32a concentration was determined to be 360.3 ng/mL in K-562 cell extract based on a 1.2 mg/mL extract load.



Cytometric bead array standard curve of MP02532-1, FCGR2A / CD32a Recombinant Matched Antibody Pair, PBS Only. Capture antibody: 86588-2-PBS. Detection antibody: 86588-1-PBS. Standard: Eg2713. Range: 0.781-50 ng/mL



Biolayer interferometry (BLI) kinetic assays of 86588-2-RR against Human CD32 were performed. The affinity constant is 5.25 nM.