

For Research Use Only

PPP4C Recombinant monoclonal antibody, PBS Only

Catalog Number:86600-3-PBS



Basic Information

Catalog Number: 86600-3-PBS	GenBank Accession Number: BC001416	Purification Method: Protein A purification
Size: 100ug , Concentration: 1 mg/ml by Nanodrop;	GeneID (NCBI): 5531	CloneNo.: 251478E5
Source: Rabbit	UNIPROT ID: P60510	
Isotype: IgG	Full Name: protein phosphatase 4 (formerly X), catalytic subunit	
Immunogen Catalog Number: AG0356	Calculated MW: 35 kDa	
	Observed MW: 35 kDa	

Applications

Tested Applications:
WB, IHC, Indirect ELISA

Species Specificity:
human, mouse

Background Information

The phosphorylation and dephosphorylation of proteins on serine and threonine residues is an essential means of regulating a broad range of cellular functions. The serine/threonine protein phosphatases (PP) are intimately involved in this process. Serine/threonine protein phosphatase X (PPX; also called protein phosphatase 4 (PP4)) are specifically associated with nuclear factor-kappa B (NF-kappa B) p50, c-Rel, and RelA, which are pleiotropic transcription factors that play central roles in the immune and inflammatory responses, as well as apoptosis. Overexpression of PPX stimulated the DNA-binding activity of c-Rel and activated NF-kappa B-mediated transcription. Although the mechanism by which PPX activates Rel/NF-kappa B-mediated transcription is unclear, PPX appeared to act on Rel/NF-kappa B proteins directly through augmentation of c-Rel activity. It is also possible that PPX may dephosphorylate and subsequently activate other c-Rel-associated transcription factors or other kinases regulating I kappaB (e.g. I kappa B kinases or MEKK1). These data suggest that PPX is an activator, but not an inhibitor, of c-Rel/NF-kappa B, which is in contrast to other protein phosphatases.

Storage

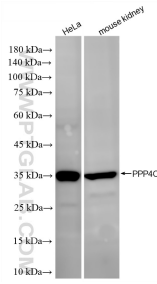
Storage:
Store at -80°C.

Storage Buffer:
PBS only, pH7.3

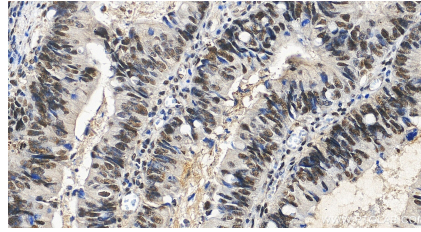
For technical support and original validation data for this product please contact:
T: 1 (888) 4PTGLAB (1-888-478-4522) (toll free in USA), or 1(312) 455-8498 (outside USA) E: proteintech@ptglab.com
W: ptglab.com

This product is exclusively available under Proteintech Group brand and is not available to purchase from any other manufacturer.

Selected Validation Data

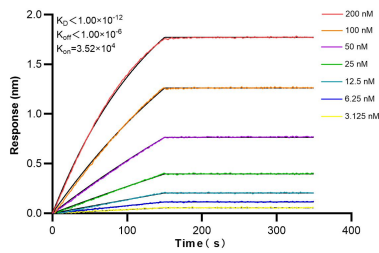


Various lysates were subjected to SDS PAGE followed by western blot with 86600-3-RR (PPP4C antibody) at dilution of 1:10000 incubated at room temperature for 1.5 hours. This data was developed using the same antibody clone with 86600-3-PBS in a different storage buffer formulation.



Immunohistochemical analysis of paraffin-embedded rat kidney tissue slide using 86600-3-RR (PPP4C antibody) at dilution of 1:1000 (under 20x lens). Heat mediated antigen retrieval with Tris-EDTA buffer (pH 9.0). This data was developed using the same antibody clone with 86600-3-PBS in a different storage buffer formulation.

Immunohistochemical analysis of paraffin-embedded human colon cancer tissue slide using 86600-3-RR (PPP4C antibody) at dilution of 1:1000 (under 20x lens). Heat mediated antigen retrieval with Tris-EDTA buffer (pH 9.0). This data was developed using the same antibody clone with 86600-3-PBS in a different storage buffer formulation.



Biolayer interferometry (BLI) kinetic assays of 86600-3-RR against Human PPP4C were performed. The affinity constant is below 1 pM.